

Anti-PD-L2 Antibody [PDL2/2676] - BSA and Azide free (A253570)

Specifications:

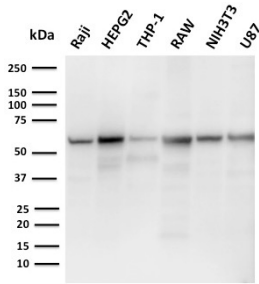
Name:	Anti-PD-L2 Antibody [PDL2/2676] - BSA and Azide free
Description:	Mouse monoclonal [PDL2/2676] antibody to PD-L2.
Specificity:	This antibody recognizes a protein of about 31kDa, which is identified as PD-L2 (same as PDCD1LG2). Engagement of CD28 by B7-1 (CD80) or B7-2 (CD86) in the presence of antigen promotes T cell proliferation, cytokine production, differentiation of effector T cells and the induction of Bcl-x, a promoter of T cell survival. Conversely, engagement of CTLA4 by B7-1 or B7-2 may inhibit proliferation and IL-2 production. PD-L2 does not bind CD28, cytotoxic T lymphocyte A4 or ICOS (inducible co-stimulator). The constitutive expression of PD-L1 and PD-L2 on parenchymal cells of heart, lung and kidney suggests that the Pdc1-Pdcd-L system could provide unique negative signaling to help prevent autoimmune disease.
Applications:	ELISA, Flow Cytometry, IF, WB
Recommended Dilutions:	Flow Cytometry: 1-2 µg/million cells, IF: 1-2 µg/ml, WB: 1-2 µg/ml
Reactivity:	Human
Immunogen:	Recombinant fragment, around amino acids 27-220, of human PD-L2 protein. The exact sequence is proprietary.
Host:	Mouse
Clonality:	Monoclonal
Clone ID:	PDL2/2676
Isotype:	IgG1
Light Chains:	kappa
Conjugate:	Unconjugated
Purification:	Protein A/G chromatography.
Concentration:	1 mg/ml
Product Form:	Liquid
Formulation:	Supplied in 10mM Phosphate Buffered Saline; without Sodium Azide and carrier free.
Storage:	Shipped at 4°C. Upon delivery aliquot and store at -20°C. Avoid freeze / thaw cycles.
General Notes:	This monoclonal antibody is also available in a different formulation with BSA and Sodium Azide - Anti-PD-L2 Antibody [PDL2/2676] (A250390).

Anti-PD-L2 Antibody [PDL2/2676] - BSA and Azide free (A253570)

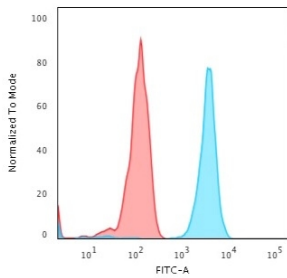
Specifications continued:

Disclaimer: This product is for research use only. It is not intended for diagnostic or therapeutic use.

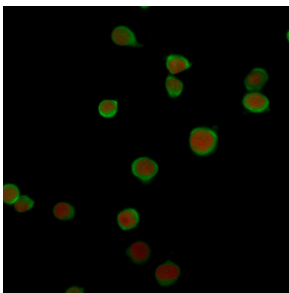
Images:



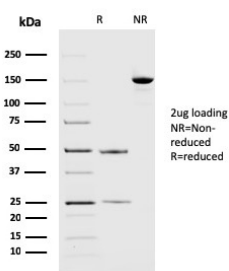
Western blot analysis of Raji, HepG2, THP-1, RAW, NIH3T3, and U87 cell lysates using Anti-PD-L2 Antibody [PDL2/2676].



Flow cytometric analysis of Jurkat cells using Anti-PD-L2 Antibody [PDL2/2676] followed by Goat Anti-Mouse IgG (CF® 488) (Blue). Isotype Control (Red).



Immunofluorescent analysis of Jurkat cells stained with Anti-PD-L2 Antibody [PDL2/2676] followed by Goat Anti-Mouse IgG (CF® 488) (Green). The nuclear counterstain is RedDot (Red).



SDS-PAGE analysis of Anti-PD-L2 Antibody [PDL2/2676] under non-reduced and reduced conditions; showing intact IgG and intact heavy and light chains, respectively. SDS-PAGE analysis confirms the integrity and purity of the antibody.