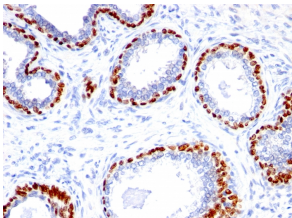


## Anti-p40 Antibody - BSA and Azide free (A253615)

### Specifications:

Name:	Anti-p40 Antibody - BSA and Azide free
Description:	Rabbit polyclonal antibody to p40.
Applications:	WB, IHC-P
Recommended Dilutions:	WB: 1-2 µg/ml, IHC-P: 1-2 µg/ml
Reactivity:	Human, Mouse, Rat, Bovine
Immunogen:	Synthetic peptide corresponding to amino acids 5-17 of human p40.
Sequence:	ENNAQTQFSEPPQY
Host:	Rabbit
Clonality:	Polyclonal
Isotype:	IgG
Conjugate:	Unconjugated
Purification:	Protein A chromatography.
Concentration:	1 mg/ml
Product Form:	Liquid
Formulation:	Supplied in 10mM Phosphate Buffered Saline; without Sodium Azide and carrier free.
Storage:	Shipped at 4°C. Upon delivery aliquot and store at -20°C. Avoid freeze / thaw cycles.
General Notes:	This monoclonal antibody is also available in a different formulation with BSA and Sodium Azide - Anti-p40 Antibody (A250435).
Disclaimer:	This product is for research use only. It is not intended for diagnostic or therapeutic use.

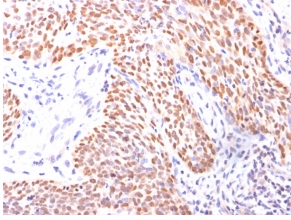
### Images:



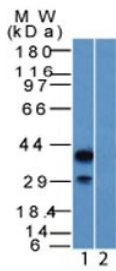
Immunohistochemical analysis of formalin-fixed, paraffin-embedded human prostate carcinoma using Anti-p40 Antibody.

## Anti-p40 Antibody - BSA and Azide free (A253615)

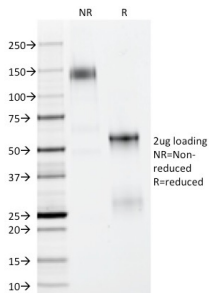
Images continued:



Immunohistochemical analysis of formalin-fixed, paraffin-embedded lung squamous cell carcinoma using Anti-p40 Antibody.



Western blot analysis of HEK293 lysate in the (1) absence and (2) presence of immunizing peptide using Anti-p40 Antibody.



SDS-PAGE analysis of Anti-p40 Antibody under non-reduced and reduced conditions; showing intact IgG and intact heavy and light chains, respectively. SDS-PAGE analysis confirms the integrity and purity of the antibody.