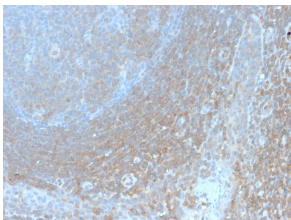


Anti-BCL10 Antibody [BL10/2988R] - BSA and Azide free (A253638)

Specifications:

Name:	Anti-BCL10 Antibody [BL10/2988R] - BSA and Azide free
Description:	Recombinant rabbit monoclonal [BL10/2988R] antibody to BCL10.
Applications:	Flow Cytometry, IF, IHC-P
Recommended Dilutions:	Flow Cytometry: 1-2 µg/million cells, IF: 1-2 µg/ml, IHC-P: 1-2 µg/ml
Reactivity:	Human
Immunogen:	Recombinant fragment, around amino acids 122-168, of human BCL10 protein. The exact sequence is proprietary.
Host:	Rabbit
Clonality:	Monoclonal
Clone ID:	BL10/2988R
Isotype:	IgG
Conjugate:	Unconjugated
Purification:	Protein A/G chromatography.
Concentration:	1 mg/ml
Product Form:	Liquid
Formulation:	Supplied in 10mM Phosphate Buffered Saline; without Sodium Azide and carrier free.
Storage:	Shipped at 4°C. Upon delivery aliquot and store at -20°C. Avoid freeze / thaw cycles.
General Notes:	This monoclonal antibody is also available in a different formulation with BSA and Sodium Azide - Anti-BCL10 Antibody [BL10/2988R] (A250458).
Disclaimer:	This product is for research use only. It is not intended for diagnostic or therapeutic use.

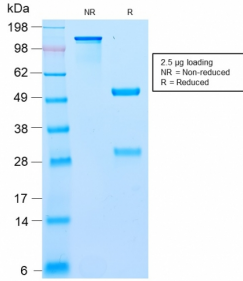
Images:



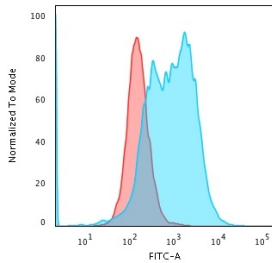
Immunohistochemical analysis of formalin-fixed, paraffin-embedded human tonsil using Anti-BCL10 Antibody [BL10/2988R].

Anti-BCL10 Antibody [BL10/2988R] - BSA and Azide free (A253638)

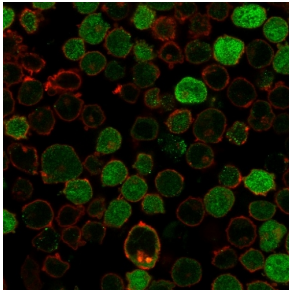
Images continued:



SDS-PAGE analysis of Anti-BCL10 Antibody [BL10/2988R] under non-reduced and reduced conditions; showing intact IgG and intact heavy and light chains, respectively. SDS-PAGE analysis confirms the integrity and purity of the antibody.



Flow cytometric analysis of PFA fixed K562 cells using Anti-BCL10 Antibody [BL10/2988R] followed by Goat Anti-Rabbit IgG (CF® 488) (Blue). Isotype Control (Red).



Immunofluorescent analysis of PFA fixed K562 cells stained with Anti-BCL10 Antibody [BL10/2988R] followed by Goat Anti-Rabbit IgG (CF® 488) (Green). Nuclear counterstain is RedDot (Red).