

## Anti-CD20 Antibody [B9E9] - BSA and Azide free (A253773)

### Specifications:

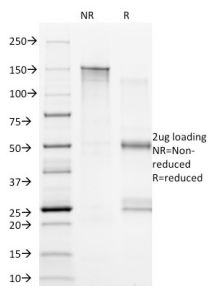
Name:	Anti-CD20 Antibody [B9E9] - BSA and Azide free
Description:	Mouse monoclonal [B9E9] antibody to CD20.
Specificity:	This antibody recognizes a protein of 33-37kDa, identified as CD20 (Workshop V; Code CD20.12). B9E9 This antibody recognizes extracellular domain of CD20. The epitope is similar to or identical to that recognized by other CD20 antibodies including Leu-16 and B1. This MAb can be used for immunophenotyping of leukemia and malignant cells, B lymphocyte detection in peripheral blood, B cell localization in tissues and B lymphocyte purification by immunosorbent methods. CD20 is a non-Ig differentiation antigen of B-cells and its expression is restricted to normal and neoplastic B-cells, being absent from all other leukocytes and tissues. CD20 is expressed by pre B-cells and persists during all stages of B-cell maturation but is lost upon terminal differentiation into plasma cells. Protein passes through the membrane 4 times with both ends in cytoplasm and exposes one short and one longer loop to the external environment. CD20 is not glycosylated in resting B cells and its cytoplasmic domains are differentially phosphorylated upon activation. It acts as a calcium channel involved in B-cell activation and cell cycle progression.
Applications:	Functional Studies, Flow Cytometry, IF
Recommended Dilutions:	Flow Cytometry: 1-2 µg/million cells, IF: 1-2 µg/ml
Reactivity:	Human
Immunogen:	Lymphoblastoid cell line Daudi.
Host:	Mouse
Clonality:	Monoclonal
Clone ID:	B9E9
Isotype:	IgG2a
Light Chains:	kappa
Conjugate:	Unconjugated
Purification:	Protein A/G chromatography.
Concentration:	1 mg/ml
Product Form:	Liquid
Formulation:	Supplied in 10mM Phosphate Buffered Saline; without Sodium Azide and carrier free.

## Anti-CD20 Antibody [B9E9] - BSA and Azide free (A253773)

### Specifications continued:

Storage:	Shipped at 4°C. Upon delivery aliquot and store at -20°C. Avoid freeze / thaw cycles.
General Notes:	This monoclonal antibody is also available in a different formulation with BSA and Sodium Azide - Anti-CD20 Antibody [B9E9] (A250593).
Disclaimer:	This product is for research use only. It is not intended for diagnostic or therapeutic use.

### Images:



SDS-PAGE analysis of Anti-CD20 Antibody [B9E9] under non-reduced and reduced conditions; showing intact IgG and intact heavy and light chains, respectively. SDS-PAGE analysis confirms the integrity and purity of the antibody.