

Anti-CD63 Antibody [LAMP3/2990R] - BSA and Azide free (A253935)

Specifications:

Name:	Anti-CD63 Antibody [LAMP3/2990R] - BSA and Azide free
Description:	Recombinant rabbit monoclonal [LAMP3/2990R] antibody to CD63.
Specificity:	This antibody recognizes protein of 26kDa-60kDa, which is identified as CD63. Its epitope is different from that of MAb LAMP3/529. The tetraspanins are integral membrane proteins expressed on cell surface and granular membranes of hematopoietic cells and are components of multi-molecular complexes with specific integrins. The tetraspanin CD63 is a lysosomal membrane glycoprotein that translocates to the plasma membrane after platelet activation. CD63 is expressed on activated platelets, monocytes and macrophages, and is weakly expressed on granulocytes, T cell and B cells. It is located on the basophilic granule membranes and on the plasma membranes of lymphocytes and granulocytes. CD63 is a member of the TM4 superfamily of leukocyte glycoproteins that includes CD9, CD37 and CD53, which contain four transmembrane regions. CD63 may play a role in phagocytic and intracellular lysosome-phagosome fusion events. CD63 deficiency is associated with Hermansky-Pudlak syndrome and is strongly expressed during the early stages of melanoma progression.
Applications:	Flow Cytometry, IHC-P
Recommended Dilutions:	Flow Cytometry: 1-2 µg/million cells, IHC-P: 1-2 µg/ml
Reactivity:	Human
Immunogen:	Recombinant full-length human CD63 protein.
Host:	Rabbit
Clonality:	Monoclonal
Clone ID:	LAMP3/2990R
Isotype:	IgG
Conjugate:	Unconjugated
Purification:	Protein A/G chromatography.
Concentration:	1 mg/ml
Product Form:	Liquid
Formulation:	Supplied in 10mM Phosphate Buffered Saline; without Sodium Azide and carrier free.
Storage:	Shipped at 4°C. Upon delivery aliquot and store at -20°C. Avoid freeze / thaw cycles.

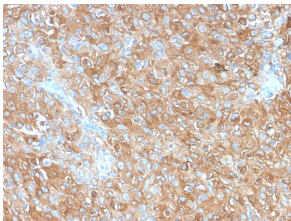
Anti-CD63 Antibody [LAMP3/2990R] - BSA and Azide free (A253935)

Specifications continued:

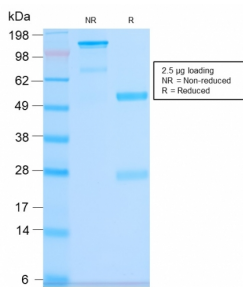
General Notes: This monoclonal antibody is also available in a different formulation with BSA and Sodium Azide - Anti-CD63 Antibody [LAMP3/2990R] (A250755).

Disclaimer: This product is for research use only. It is not intended for diagnostic or therapeutic use.

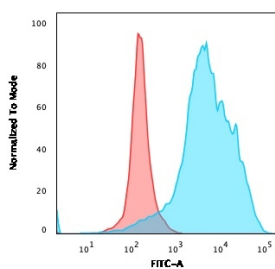
Images:



Immunohistochemical analysis of formalin-fixed, paraffin-embedded human prostate carcinoma using Anti-CD63 Antibody [LAMP3/2990R].



SDS-PAGE analysis of Anti-CD63 Antibody [LAMP3/2990R] under non-reduced and reduced conditions; showing intact IgG and intact heavy and light chains, respectively. SDS-PAGE analysis confirms the integrity and purity of the antibody.



Flow cytometric analysis of PFA fixed U87MG cells using Anti-CD63 Antibody [LAMP3/2990R] followed by Goat Anti-Rabbit IgG (CF® 488) (Blue). Isotype Control (Red).