

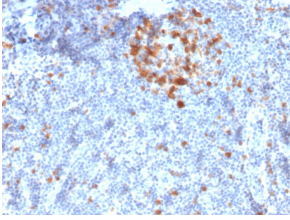
## Anti-CDK1 Antibody [A17.1.1] - BSA and Azide free (A253988)

### Specifications:

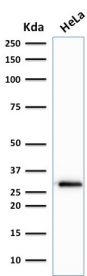
Name:	Anti-CDK1 Antibody [A17.1.1] - BSA and Azide free
Description:	Mouse monoclonal [A17.1.1] antibody to CDK1.
Specificity:	The epitope for this antibody maps near the C-terminus of the protein and its core is thought to be LGTPNNEV (amino acids 220-227 in murine CDC2). This antibody shows no cross reactivity with CDK2 p32. This antibody reportedly inhibits the activation of p34cdc2 kinase by cyclins.
Applications:	IF, IP, WB, IHC-P, Kinase Assay
Recommended Dilutions:	IF: 1-2 µg/ml, IHC-P: 2-4 µg/ml
Reactivity:	Human, Mouse, Rat, Guinea Pig, Woodchuck, Xenopus, Chicken
Immunogen:	C-terminal 2/3rds of Xenopus CDC2 protein, expressed in E. coli.
Host:	Mouse
Clonality:	Monoclonal
Clone ID:	A17.1.1
Isotype:	IgG2a
Light Chains:	kappa
Conjugate:	Unconjugated
Purification:	Protein A/G chromatography.
Concentration:	1 mg/ml
Product Form:	Liquid
Formulation:	Supplied in 10mM Phosphate Buffered Saline; without Sodium Azide and carrier free.
Storage:	Shipped at 4°C. Upon delivery aliquot and store at -20°C. Avoid freeze / thaw cycles.
General Notes:	This monoclonal antibody is also available in a different formulation with BSA and Sodium Azide - Anti-CDK1 Antibody [A17.1.1] (A250808).
Disclaimer:	This product is for research use only. It is not intended for diagnostic or therapeutic use.

## Anti-CDK1 Antibody [A17.1.1] - BSA and Azide free (A253988)

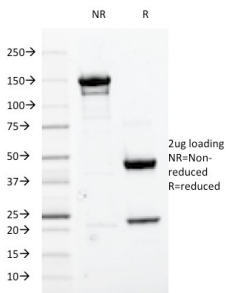
### Images:



Immunohistochemical analysis of formalin-fixed, paraffin-embedded human tonsil using Anti-CDK1 Antibody [A17.1.1].



Western blot analysis of human HeLa cell lysate using Anti-CDK1 Antibody [A17.1.1].



SDS-PAGE analysis of Anti-CDK1 Antibody [A17.1.1] under non-reduced and reduced conditions; showing intact IgG and intact heavy and light chains, respectively. SDS-PAGE analysis confirms the integrity and purity of the antibody.