

Anti-Blood Group Lewis a Antibody [SPM279] - BSA and Azide free (A254082)

Specifications:

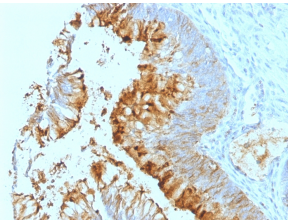
Name:	Anti-Blood Group Lewis a Antibody [SPM279] - BSA and Azide free
Description:	Mouse monoclonal [SPM279] antibody to Blood Group Lewis a.
Specificity:	This antibody recognizes a carbohydrate determinant of Gal 1-3(Fuc 1-4) GlcNAc which is blood group antigen Lewis A. It is present primarily on epithelial cells such as colon and kidneys. In the tumors and dedifferentiated tissues, decrease of Lewis A antigen was observed. Lewis A (type 1 chain) is expressed in colonic epithelial cells and may be useful for detection of gastrointestinal tumors, pancreatic cancer, and colorectal tumors. Blood group related antigens represent a group of carbohydrate determinants carried on both glycolipids and glycoproteins. They are usually mucin-type, and are detected on erythrocytes, certain epithelial cells, and in secretions of certain individuals. Sixteen genetically and biosynthetically distinct but inter-related specificities belong to this group of antigens, including A, B, H, Lewis A, Lewis B, Lewis X, Lewis Y, and precursor type 1 chain antigens.
Applications:	Flow Cytometry, IF, IHC-P
Recommended Dilutions:	Flow Cytometry: 1-2 µg/million cells, IF: 1-2 µg/ml, IHC-P: 1-2 µg/ml
Reactivity:	Human, Mouse
Immunogen:	Mucins isolated from ovarian cyst fluid.
Host:	Mouse
Clonality:	Monoclonal
Clone ID:	SPM279
Isotype:	IgG1
Light Chains:	kappa
Conjugate:	Unconjugated
Purification:	Protein A/G chromatography.
Concentration:	1 mg/ml
Product Form:	Liquid
Formulation:	Supplied in 10mM Phosphate Buffered Saline; without Sodium Azide and carrier free.
Storage:	Shipped at 4°C. Upon delivery aliquot and store at -20°C. Avoid freeze / thaw cycles.

Anti-Blood Group Lewis a Antibody [SPM279] - BSA and Azide free (A254082)

Specifications continued:

General Notes:	This monoclonal antibody is also available in a different formulation with BSA and Sodium Azide - Anti-Blood Group Lewis a Antibody [SPM279] (A250902).
Disclaimer:	This product is for research use only. It is not intended for diagnostic or therapeutic use.

Images:



Immunohistochemical analysis of formalin-fixed, paraffin-embedded human colon carcinoma using Anti-Blood Group Lewis a Antibody [SPM279].