

Anti-Neurofilament Heavy Polypeptide Antibody [2F11] - BSA and Azide free (A254103)

Specifications:

Name:	Anti-Neurofilament Heavy Polypeptide Antibody [2F11] - BSA and Azide free
Description:	Mouse monoclonal [2F11] antibody to Neurofilament Heavy Polypeptide.
Specificity:	This antibody reacts with a 200kDa and 68kDa protein, identified as heavy and light sub-units of neurofilaments (NF-H NF-L). Neurofilaments make up the main structural elements of axons and dendrites and are found in neurons, peripheral nerves, and sympathetic ganglion cells. Neurofilaments consist of three major subunits with molecular weights of 68kDa (NF-L), 160kDa (NF-M) and 200kDa (NF-H). Anti-neurofilament stains a number of neural, neuroendocrine, and endocrine tumors. Neuromas, ganglioneuromas, gangliogliomas, ganglioneuroblastomas, and neuroblastomas stain positively for anti-neurofilament. Neurofilaments are also present in paragangliomas as well as adrenal and extra-adrenal pheochromocytomas. Carcinoids, neuroendocrine carcinomas of the skin, and oat cell carcinomas of the lung also express neurofilament.
Applications:	WB, IHC-P
Recommended Dilutions:	WB: 1-2 µg/ml, IHC-P: 1-2 µg/ml
Reactivity:	Human, Mouse, Rat
Immunogen:	Native human NF-H isolated from brain cells.
Host:	Mouse
Clonality:	Monoclonal
Clone ID:	2F11
Isotype:	IgG1
Light Chains:	kappa
Conjugate:	Unconjugated
Purification:	Protein A/G chromatography.
Concentration:	1 mg/ml
Product Form:	Liquid
Formulation:	Supplied in 10mM Phosphate Buffered Saline; without Sodium Azide and carrier free.
Storage:	Shipped at 4°C. Upon delivery aliquot and store at -20°C. Avoid freeze / thaw cycles.
General Notes:	This monoclonal antibody is also available in a different formulation with BSA and Sodium Azide - Anti-Neurofilament Heavy Polypeptide Antibody [2F11] (A250923).

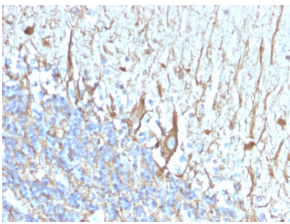
Anti-Neurofilament Heavy Polypeptide Antibody [2F11] - BSA and Azide free (A254103)

Specifications continued:

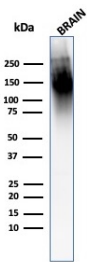
Disclaimer:

This product is for research use only. It is not intended for diagnostic or therapeutic use.

Images:



Immunohistochemical analysis of formalin-fixed, paraffin-embedded human cerebellum using Anti-Neurofilament Heavy Polypeptide Antibody [2F11].



Western blot analysis of human brain tissue lysate using Anti-Neurofilament Heavy Polypeptide Antibody [2F11].