

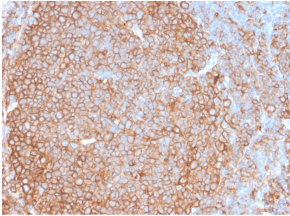
Anti-HLA DP + DQ + DR Antibody [HLA-Pan/2967R] - BSA and Azide free (A254185)

Specifications:

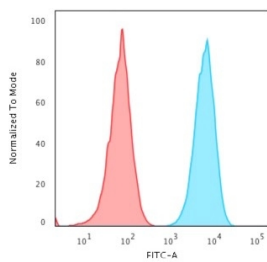
Name:	Anti-HLA DP + DQ + DR Antibody [HLA-Pan/2967R] - BSA and Azide free
Description:	Recombinant rabbit monoclonal [HLA-Pan/2967R] antibody to HLA DP + DQ + DR.
Specificity:	This antibody reacts with a common epitope of human major histocompatibility (MHC) class II antigens: HLA DP, HLA DQ, and HLA DR.
Applications:	ELISA, Flow Cytometry, IF, WB, IHC-P
Recommended Dilutions:	ELISA: 2-5 µg/ml, Flow Cytometry: 1-2 µg/million cells, IF: 1-2 µg/ml, WB: 1-2 µg/ml, IHC-P: 1-2 µg/ml
Reactivity:	Human
Immunogen:	Non-T, non-B human acute lymphoblastic leukemia REH6 cell line.
Host:	Rabbit
Clonality:	Monoclonal
Clone ID:	HLA-Pan/2967R
Isotype:	IgG
Conjugate:	Unconjugated
Purification:	Protein A/G chromatography.
Concentration:	1 mg/ml
Product Form:	Liquid
Formulation:	Supplied in 10mM Phosphate Buffered Saline; without Sodium Azide and carrier free.
Storage:	Shipped at 4°C. Upon delivery aliquot and store at -20°C. Avoid freeze / thaw cycles.
General Notes:	This monoclonal antibody is also available in a different formulation with BSA and Sodium Azide - Anti-HLA DP + DQ + DR Antibody [HLA-Pan/2967R] (A251006).
Disclaimer:	This product is for research use only. It is not intended for diagnostic or therapeutic use.

Anti-HLA DP + DQ + DR Antibody [HLA-Pan/2967R] - BSA and Azide free (A254185)

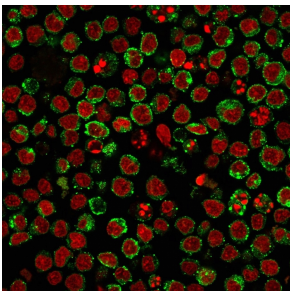
Images:



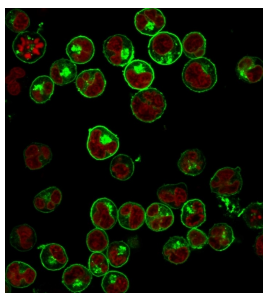
Immunohistochemical analysis of formalin-fixed, paraffin-embedded human tonsil using Anti-HLA DP + DQ + DR Antibody [HLA-Pan/2967R].



Flow cytometric analysis of Raji cells using Anti-HLA DP + DQ + DR Antibody [HLA-Pan/2967R] followed by Goat Anti-Rabbit IgG (CF@ 488) (Blue). Isotype Control (Red).



Flow cytometric analysis of Ramos cells using Anti-HLA DP + DQ + DR Antibody [HLA-Pan/2967R] followed by Goat Anti-Rabbit IgG (CF@ 488) (Blue). Isotype Control (Red).



Immunofluorescent analysis of Raji cells stained with Anti-HLA DP + DQ + DR Antibody [HLA-Pan/2967R] followed by Goat Anti-Rabbit IgG (CF@ 488) (Green). Nuclei stained with RedDot (Red).