

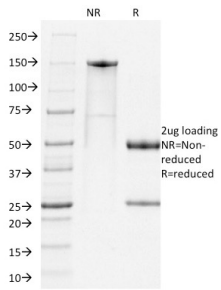
Anti-PD1 Antibody [RMP1-14] - BSA and Azide free (A254212)

Specifications:

Name:	Anti-PD1 Antibody [RMP1-14] - BSA and Azide free
Description:	Rat monoclonal [RMP1-14] antibody to PD1.
Applications:	ELISA, Neutralization Studies, Flow Cytometry, IF
Recommended Dilutions:	Flow Cytometry: 1-2 µg/million cells, IF: 1-2 µg/ml
Reactivity:	Mouse
Cross Reactivity:	This antibody does not cross react with Human.
Immunogen:	PDCD1 transfected BHK cells.
Host:	Rat
Clonality:	Monoclonal
Clone ID:	RMP1-14
Isotype:	IgG2a
Light Chains:	kappa
Conjugate:	Unconjugated
Purification:	Protein A/G chromatography.
Concentration:	1 mg/ml
Product Form:	Liquid
Formulation:	Supplied in 10mM Phosphate Buffered Saline; without Sodium Azide and carrier free.
Storage:	Shipped at 4°C. Upon delivery aliquot and store at -20°C. Avoid freeze / thaw cycles.
General Notes:	This monoclonal antibody is also available in a different formulation with BSA and Sodium Azide - Anti-PD1 Antibody [RMP1-14] (A251033).
Disclaimer:	This product is for research use only. It is not intended for diagnostic or therapeutic use.

Anti-PD1 Antibody [RMP1-14] - BSA and Azide free (A254212)

Images:



SDS-PAGE analysis of Anti-PD1 Antibody [RMP1-14] under non-reduced and reduced conditions; showing intact IgG and intact heavy and light chains, respectively. SDS-PAGE analysis confirms the integrity and purity of the antibody.