

Anti-CD20 Antibody [SPM494] (A254286)

Specifications:

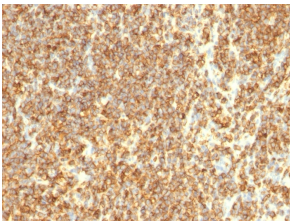
Name:	Anti-CD20 Antibody [SPM494]
Description:	Mouse monoclonal [SPM494] antibody to CD20.
Specificity:	This antibody recognizes a protein of 30-33kDa, which is identified as CD20. Its epitope is located in the cytoplasmic domain of CD20 and was, therefore, ascribed as CD20cy in the 5th Workshop. CD20 is a non-Ig differentiation antigen of B-cells and its expression is restricted to normal and neoplastic B-cells, being absent from all other leukocytes and tissues. CD20 is expressed by pre B-cells and persists during all stages of B-cell maturation but is lost upon terminal differentiation into plasma cells. This MAb can be used for immunophenotyping of leukemia and malignant cells, B lymphocyte detection in peripheral blood and B cell localization in tissues. It reacts with the majority of B-cells present in peripheral blood and lymphoid tissues and their derived lymphomas. In lymphoid tissue, germinal center blasts and B-immunoblasts are particularly reactive. It is a reliable antibody for ascribing a B-cell phenotype in known lymphoid tissues. Rarely, CD20-positive T-cell lymphomas have been reported. Reactivity has also been noted with Reed-Sternberg cells in cases of Hodgkin s disease, particularly of lymphocyte predominant type.
Applications:	Flow Cytometry, IF, IHC-P
Recommended Dilutions:	Flow Cytometry: 2-5µg/million cells, IF: 1:100-1:200, IHC-P: 2-4 µg/ml
Reactivity:	Human, Baboon, Monkey
Cross Reactivity:	This antibody does not cross react with Bovine, Canine, Porcine, or Rat.
Immunogen:	Human tonsil B cells.
Host:	Mouse
Clonality:	Monoclonal
Clone ID:	SPM494
Isotype:	IgG2a
Light Chains:	kappa
Conjugate:	Unconjugated
Purity:	Tissue culture supernatant.
Product Form:	Liquid
Formulation:	Supplied as an aliquot of tissue culture supernatant with 0.05% Sodium Azide.

Anti-CD20 Antibody [SPM494] (A254286)

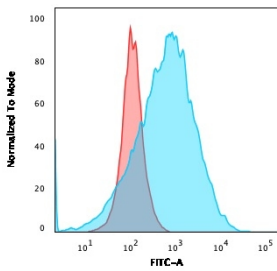
Specifications continued:

Storage:	Shipped at 4°C. Upon delivery aliquot and store at -20°C. Avoid freeze / thaw cycles.
Disclaimer:	This product is for research use only. It is not intended for diagnostic or therapeutic use.

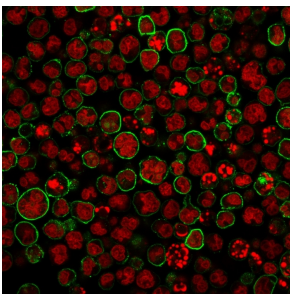
Images:



Immunohistochemical analysis of formalin-fixed, paraffin-embedded human lymphoma using Anti-CD20 Antibody [SPM494].



Flow cytometric analysis of Raji cells using Anti-CD20 Antibody [SPM494] followed by Goat Anti-Mouse IgG (CF® 488) (Blue). Isotype Control (Red).



Immunofluorescent analysis of MOLT-4 cells stained with Anti-CD20 Antibody [SPM494] followed by Goat Anti-Mouse IgG (CF® 488) (Green). Nuclei are stained with RedDot.