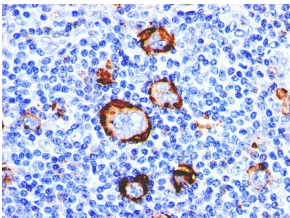


Anti-CD15 Antibody [Leu-M1] - BSA and Azide free (A254303)

Specifications:

Name:	Anti-CD15 Antibody [Leu-M1] - BSA and Azide free
Description:	Mouse monoclonal [Leu-M1] antibody to CD15.
Applications:	Flow Cytometry, IF, IHC-P
Recommended Dilutions:	Flow Cytometry: 1-2 µg/million cells, IF: 1-2 µg/ml, IHC-P: 1-2 µg/ml
Reactivity:	Human
Immunogen:	U937 histiocytic cell line.
Host:	Mouse
Clonality:	Monoclonal
Clone ID:	Leu-M1
Isotype:	IgM
Light Chains:	kappa
Conjugate:	Unconjugated
Concentration:	1 mg/ml
Product Form:	Liquid
Formulation:	Supplied in 10mM Phosphate Buffered Saline; without Sodium Azide and carrier free.
Storage:	Shipped at 4°C. Upon delivery aliquot and store at -20°C. Avoid freeze / thaw cycles.
General Notes:	This antibody is also known as Clone MMA. This monoclonal antibody is also available in a different formulation with BSA and Sodium Azide - Anti-CD15 Antibody [Leu-M1] (A248664).
Disclaimer:	This product is for research use only. It is not intended for diagnostic or therapeutic use.

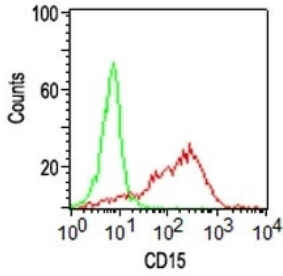
Images:



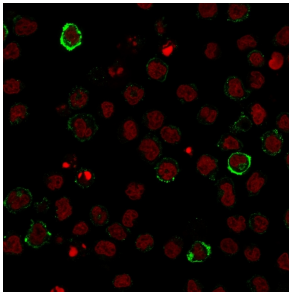
Immunohistochemical analysis of formalin-fixed, paraffin-embedded human Hodgkin's lymphoma using Anti-CD15 Antibody [Leu-M1].

Anti-CD15 Antibody [Leu-M1] - BSA and Azide free (A254303)

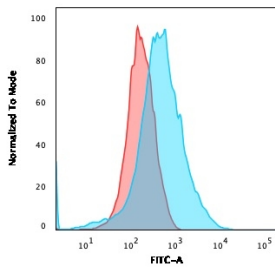
Images continued:



Flow cytometric analysis of human monocytes labeling CD15 with Anti-CD15 Antibody [Leu-M1].



Immunofluorescent analysis of U937 cells stained with Anti-CD15 Antibody [Leu-M1] followed by Goat Anti-Mouse IgG (CF® 488) (Green). Nuclei are stained with RedDot.



Flow cytometric analysis of U937 cells using Anti-CD15 Antibody [Leu-M1] followed by Goat Anti-Mouse IgG (CF® 488) (Blue). Isotype Control (Red).