

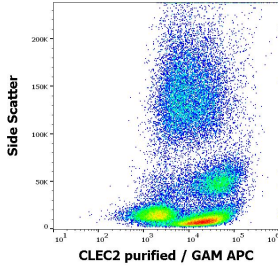
Anti-CLEC2 Antibody [AYP1] (A254430)

Specifications:

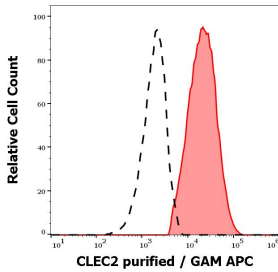
Name:	Anti-CLEC2 Antibody [AYP1]
Description:	Mouse monoclonal [AYP1] antibody to CLEC2.
Specificity:	This antibody recognizes an epitope within the extracellular part of CLEC2, a transmembrane glycoprotein expressed on activated platelets and on platelet microparticles.
Applications:	ICC, Flow Cytometry, IP
Recommended Dilutions:	Flow Cytometry: 1-4 µg/ml
Reactivity:	Human
Immunogen:	Recombinant fragment corresponding to the extracellular domain, amino acids 68-229, of human CLEC2 protein.
Host:	Mouse
Clonality:	Monoclonal
Clone ID:	AYP1
Isotype:	IgG1
Light Chains:	kappa
Conjugate:	Unconjugated
Purification:	Protein A chromatography.
Concentration:	1 mg/ml
Product Form:	Liquid
Formulation:	Supplied in Phosphate Buffered Saline with 15 mM Sodium Azide.
Storage:	Shipped at 4°C. Upon delivery aliquot and store at -20°C. Avoid freeze / thaw cycles.
Disclaimer:	This product is for research use only. It is not intended for diagnostic or therapeutic use.

Anti-CLEC2 Antibody [AYP1] (A254430)

Images:



Flow cytometric analysis of human peripheral whole blood stained with Anti-CLEC2 Antibody [AYP1] (concentration in sample 1.7µg/ml, GAM-APC).



Separation of human CLEC2 positive thrombocytes (red-filled) from human lymphocytes (black-dashed) in flow cytometry analysis (surface staining) of peripheral whole blood stained with Anti-CLEC2 Antibody [AYP1] (concentration in sample 1.7µg/ml, GAM-APC).