

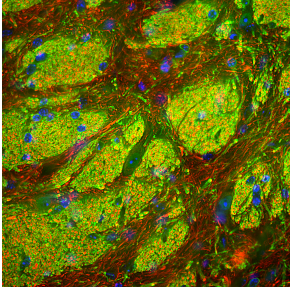
## Anti-CNPase Antibody (A270543)

### Specifications:

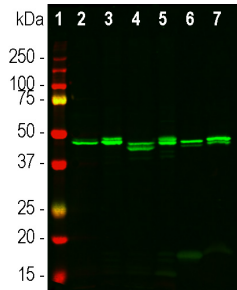
Name:	Anti-CNPase Antibody
Description:	Goat polyclonal antibody to CNPase.
Applications:	WB, ICC/IF, IHC
Recommended Dilutions:	WB: 1:5,000, ICC/IF: 1:3,000
Reactivity:	Human, Rat, Mouse, Bovine, Porcine
Immunogen:	Recombinant full-length human CNPase, expressed in and purified from E. coli.
Host:	Goat
Clonality:	Polyclonal
Isotype:	IgG
Conjugate:	Unconjugated
Purification:	Immunogen affinity purification.
Concentration:	1 mg/ml
Molecular Weight:	46 kDa, 48 kDa
Product Form:	Liquid
Formulation:	Supplied in Phosphate Buffered Saline with 50% Glycerol and 5mM Sodium Azide.
Storage:	Shipped at 4°C. Upon delivery aliquot and store at -20°C. Avoid freeze / thaw cycles.
General Notes:	This antibody can be used to identify myelinating cells in cell culture and in sections, and to trace axonal projections in sectioned material.
Disclaimer:	This product is for research use only. It is not intended for diagnostic or therapeutic use.

## Anti-CNPase Antibody (A270543)

### Images:



Immunofluorescent analysis of a section of mouse striatum stained using Anti-CNPase Antibody (A270543), at a dilution of 1:3,000, in green, and co-stained with Anti-NF-L Antibody (A85451), at a dilution of 1:5,000, in red. Nuclear DNA is visualised in blue using Hoechst staining. Following transcatheter perfusion of the mouse with 4% paraformaldehyde, the brain was post-fixed for 24 hours, cut to 45  $\mu\text{m}$ , and free-floating sections were stained with the above antibodies. The Anti-CNPase Antibody (A270543) stains myelin sheath and the plasma membranes of oligodendrocytes, the myelin producing cells of the CNS. The Anti-NF-L Antibody (A85451) labels axons of neuronal cells enclosed by the myelin.



Western blot analysis of different tissue lysates using Anti-CNPase Antibody (A270543), at a dilution of 1:5,000, in green. The lanes contain samples of: [1] Protein standards, in red, [2] rat brain, [3] rat spinal cord, [4] mouse brain, [5] mouse spinal cord, [6] cow spinal cord, and [7] pig spinal cord. Bands at 46 kDa and 48 kDa correspond to the two major isotypes of CNP protein.