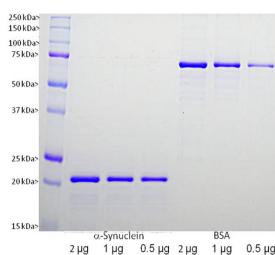


Recombinant Human alpha Synuclein Protein (A270576)

Specifications:

Name:	Recombinant Human alpha Synuclein Protein
Applications:	SDS-PAGE, ELISA
Expression System:	Escherichia coli
Nature:	Recombinant
Protein Species:	Human
Protein Length:	Full length protein.
Sequence:	The vector used in the recombinant expression of this protein adds about 5 kDa to the molecule, including a N-terminal His-tag.
Tag:	His Tag (N-terminus)
Predicted MW:	20 kDa
Product Form:	Liquid
Concentration:	1 mg/ml
Formulation:	Supplied in 6 M Urea.
Disclaimer:	This product is for research use only. It is not intended for diagnostic or therapeutic use.

Images:



Coomassie brilliant blue stained SDS-PAGE gel of Recombinant Human alpha Synuclein Protein (A270576). The lanes contain samples of: [1] Protein standards, [2] 2 µg of Recombinant Human alpha Synuclein Protein (A270576), [3] 1 µg of Recombinant Human alpha Synuclein Protein (A270576), [4] 0.5 µg of Recombinant Human alpha Synuclein Protein (A270576), [5] 2 µg of BSA, [6] 1 µg of BSA, and [7] 0.5 µg of BSA. The band on the SDS-PAGE with an apparent molecular weight of 20 kDa corresponds to the Recombinant Human alpha Synuclein Protein (A270576).