

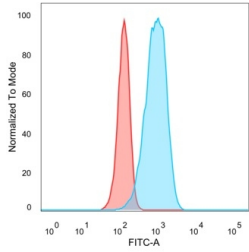
## Anti-CELF2 Antibody [PCRP-CELF2-1E4] (A277533)

### Specifications:

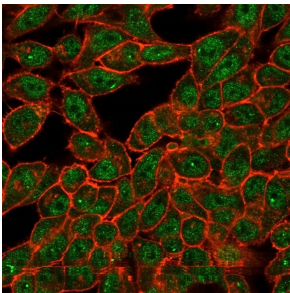
Name:	Anti-CELF2 Antibody [PCRP-CELF2-1E4]
Description:	Mouse monoclonal [PCRP-CELF2-1E4] antibody to CELF2.
Specificity:	Members of the CELF/BRUNOL protein family contain two N-terminal RNA recognition motif (RRM) domains, one C-terminal RRM domain, and a divergent segment of 160-230 aa between the second and third RRM domains. Members of this protein family regulate pre-mRNA alternative splicing and may also be involved in mRNA editing, and translation. Alternative splicing results in multiple transcript variants encoding different isoforms.
Applications:	Flow Cytometry
Recommended Dilutions:	Flow Cytometry: 1-2 µg/million cells, IF: 1-2 µg/ml
Reactivity:	Human
Immunogen:	Recombinant full-length human CELF2 protein.
Host:	Mouse
Clonality:	Monoclonal
Clone ID:	PCRP-CELF2-1E4
Isotype:	IgG2b
Light Chains:	kappa
Conjugate:	Unconjugated
Purification:	Protein A/G chromatography.
Concentration:	200 µg/ml
Product Form:	Liquid
Formulation:	Supplied in 10mM Phosphate Buffered Saline with 0.05% BSA and 0.05% Sodium Azide.
Storage:	Shipped at 4°C. Upon delivery aliquot and store at -20°C. Avoid freeze / thaw cycles.
General Notes:	This monoclonal antibody is also available in a different formulation without BSA and Sodium Azide - Anti-CELF2 Antibody [PCRP-CELF2-1E4] - BSA and Azide free (A278121).
Disclaimer:	This product is for research use only. It is not intended for diagnostic or therapeutic use.

# Anti-CELF2 Antibody [PCRP-CELF2-1E4] (A277533)

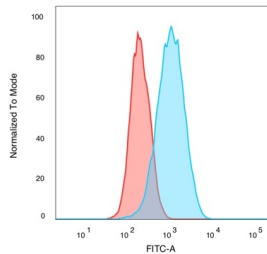
## Images:



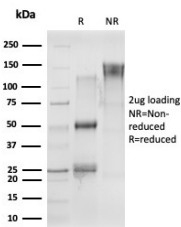
Flow cytometric analysis of PFA-fixed HeLa cells using Anti-CELF2 Antibody [PCRP-CELF2-1E4] followed by Goat Anti-Mouse IgG (CF® 488) (Blue). Unstained cells (Red).



Immunofluorescent analysis of PFA-fixed HeLa cells stained with Anti-CELF2 Antibody [PCRP-CELF2-1E4] followed by Goat Anti-Mouse IgG (CF® 488) (Green). CF® 640A Phalloidin (Red).



Flow cytometric analysis of PFA-fixed MCF-7 cells using Anti-CELF2 Antibody [PCRP-CELF2-1E4] followed by Goat Anti-Mouse IgG (CF® 488) (Blue). CF® 640A Phalloidin (Red).



SDS-PAGE analysis of Anti-CELF2 Antibody [PCRP-CELF2-1E4] under non-reduced and reduced conditions; showing intact IgG and intact heavy and light chains, respectively. SDS-PAGE analysis confirms the integrity and purity of the antibody.