

Anti-LRG1 Antibody [LRG1/4882] (A277544)

Specifications:

Name:	Anti-LRG1 Antibody [LRG1/4882]
Description:	Mouse monoclonal [LRG1/4882] antibody to LRG1.
Specificity:	LRG1 (leucine-rich $\hat{1}\pm$ 2-glycoprotein), also known as LRG, is a 347 amino acid secreted protein that contains 8 LRR (leucine-rich) repeats and one LRRCT domain. The leucine-rich repeat (LRR) family of proteins, including LRG1, have been shown to be involved in protein-protein interaction, signal transduction, cell adhesion and development. Found mainly in plasma, LRG1 is expressed during granulocyte differentiation. The gene that encodes LRG1 consists of nearly 3,000 bases and maps to human chromosome 19p13.3. Chromosome 19 consists of over 63 million bases, houses approximately 1,400 genes and is recognized for having the greatest gene density of the human chromosomes. It is the genetic home for a number of immunoglobulin (Ig) superfamily members, including the killer cell and leukocyte Ig-like receptors, a number of ICAMs, the CEACAM and PSG families and Fc receptors (FcRs).
Applications:	IHC-P
Recommended Dilutions:	IHC-P: 1-2 μ g/ml
Reactivity:	Human
Immunogen:	Recombinant fragment, around amino acids 30-180, of human LRG1 protein. The exact sequence is proprietary.
Host:	Mouse
Clonality:	Monoclonal
Clone ID:	LRG1/4882
Isotype:	IgG2b
Light Chains:	kappa
Conjugate:	Unconjugated
Purification:	Protein A/G chromatography.
Concentration:	200 μ g/ml
Product Form:	Liquid
Formulation:	Supplied in 10mM Phosphate Buffered Saline with 0.05% BSA and 0.05% Sodium Azide.
Storage:	Shipped at 4°C. Upon delivery aliquot and store at -20°C. Avoid freeze / thaw cycles.

Anti-LRG1 Antibody [LRG1/4882] (A277544)

Specifications continued:

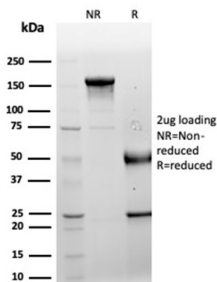
General Notes:

This monoclonal antibody is also available in a different formulation without BSA and Sodium Azide - Anti-LRG1 Antibody [LRG1/4882] - BSA and Azide free (A278132).

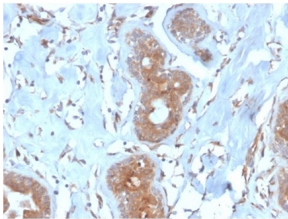
Disclaimer:

This product is for research use only. It is not intended for diagnostic or therapeutic use.

Images:



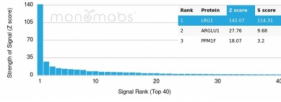
SDS-PAGE analysis of Anti-LRG1 Antibody [LRG1/4882] under non-reduced and reduced conditions; showing intact IgG and intact heavy and light chains, respectively. SDS-PAGE analysis confirms the integrity and purity of the antibody.



Immunohistochemical analysis of formalin-fixed, paraffin-embedded human breast using Anti-LRG1 Antibody [LRG1/4882] at 2 μ g/ml in PBS for 30 minutes at room temperature.

Anti-LRG1 Antibody [LRG1/4882] (A277544)

Images continued:



Analysis of protein array containing more than 19,000 full-length human proteins using Anti-LRG1 Antibody [LRG1/4882]. Z-Score and S- Score: The Z-score represents the strength of a signal that a monoclonal antibody (MAb) (in combination with a fluorescently-tagged anti-IgG secondary antibody) produces when binding to a particular protein on the HuProt™ array. Z-scores are described in units of standard deviations (SD's) above the mean value of all signals generated on that array. If targets on HuProt™ are arranged in descending order of the Z-score, the S-score is the difference (also in units of SD's) between the Z-score. S-score therefore represents the relative target specificity of a MAb to its intended target; a MAb is considered to be specific to its intended target, if the MAb has an S-score of at least 2.5. For example, if a MAb binds to protein X with a Z-score of 43 and to protein Y with a Z-score of 14, then the S-score for the binding of that MAb to protein X is equal to 29.