

Anti-Glutamine Synthetase Antibody [GLUL/6604] (A277632)

Specifications:

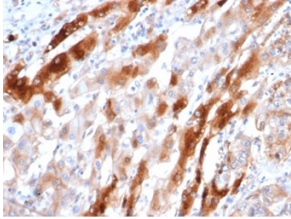
Name:	Anti-Glutamine Synthetase Antibody [GLUL/6604]
Description:	Mouse monoclonal [GLUL/6604] antibody to Glutamine Synthetase.
Specificity:	Glutamine synthetase (Gl Syn) forms a homo-octamer that serves as a catalyst for the amination of glutamic acid to form glutamine. This enzyme is a marker for astrocytes, which serve as the primary site of conversion of glutamic acid to glutamine in the brain. Induction of glutamine synthetase is seen upon astrocyte cell contact with neurons. Elevated expression of glutamine synthetase in glial cells has been shown to protect neurons from degeneration due to excess glutamate. Glutamine synthetase is also present in the liver and is involved in nitrogen homeostasis. Overexpression of glutamine synthetase has been shown in primary liver cancers, indicating a potential role for glutamine synthetase in hepatocyte transformation.
Applications:	WB, IHC-P
Recommended Dilutions:	WB: 1-2 µg/ml, IHC-P: 1-2 µg/ml
Reactivity:	Human
Immunogen:	Recombinant fragment, around amino acids 50-250, of human Glutamine Synthetase. The exact sequence is proprietary.
Host:	Mouse
Clonality:	Monoclonal
Clone ID:	GLUL/6604
Isotype:	IgG2b
Light Chains:	kappa
Conjugate:	Unconjugated
Purification:	Protein A/G chromatography.
Concentration:	200 µg/ml
Product Form:	Liquid
Formulation:	Supplied in 10mM Phosphate Buffered Saline with 0.05% BSA and 0.05% Sodium Azide.
Storage:	Shipped at 4°C. Upon delivery aliquot and store at -20°C. Avoid freeze / thaw cycles.
General Notes:	This monoclonal antibody is also available in a different formulation without BSA and Sodium Azide - Anti-Glutamine Synthetase Antibody [GLUL/6604] - BSA and Azide free (A278220).

Anti-Glutamine Synthetase Antibody [GLUL/6604] (A277632)

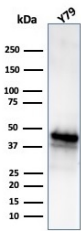
Specifications continued:

Disclaimer: This product is for research use only. It is not intended for diagnostic or therapeutic use.

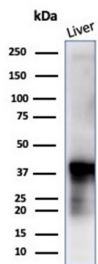
Images:



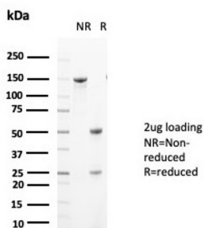
Immunohistochemical analysis of formalin-fixed, paraffin-embedded human liver tissue using Anti-Glutamine Synthetase Antibody [GLUL/6604] at 2µg/ml.



Western blot analysis of Y79 cell line lysate using Anti-Glutamine Synthetase Antibody [GLUL/6604].



Western blot analysis of human liver tissue using Anti-Glutamine Synthetase Antibody [GLUL/6604].



SDS-PAGE analysis of Anti-Glutamine Synthetase Antibody [GLUL/6604] under non-reduced and reduced conditions; showing intact IgG and intact heavy and light chains, respectively. SDS-PAGE analysis confirms the integrity and purity of the antibody.