

Anti-NME1 Antibody [NME1/2737] (A277726)

Specifications:

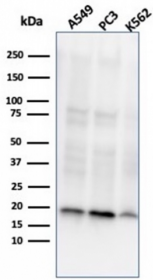
Name:	Anti-NME1 Antibody [NME1/2737]
Description:	Mouse monoclonal [NME1/2737] antibody to NME1.
Specificity:	The nm23 gene, a potential suppressor of metastasis, was originally identified by differential hybridization between two murine melanoma sub-lines, one with a high and the second with a low metastatic capacity. Highly metastatic sub-lines exhibit much lower levels of nm23 than less metastatic cells. Based on sequence analysis, nm23 appears highly related to nucleotide diphosphate kinases (NDP). In humans, NDP kinases A and B are identical to two isotypes of human nm23 homologs, namely nm23-H1 and H2, respectively. nm23-H2 is identical in sequence to PuF, a transcription factor that binds to nuclease hypersensitive elements at positions 142 to 115 of the human c-Myc promotor.
Applications:	ELISA, WB, IHC-P
Recommended Dilutions:	WB: 1-2 µg/ml, IHC-P: 1-2 µg/ml
Reactivity:	Human
Immunogen:	Recombinant full-length human NME1 protein.
Host:	Mouse
Clonality:	Monoclonal
Clone ID:	NME1/2737
Isotype:	IgG1
Light Chains:	kappa
Conjugate:	Unconjugated
Purification:	Protein A/G chromatography.
Concentration:	200 µg/ml
Product Form:	Liquid
Formulation:	Supplied in 10mM Phosphate Buffered Saline with 0.05% BSA and 0.05% Sodium Azide.
Storage:	Shipped at 4°C. Upon delivery aliquot and store at -20°C. Avoid freeze / thaw cycles.
General Notes:	This monoclonal antibody is also available in a different formulation without BSA and Sodium Azide - Anti-NME1 Antibody [NME1/2737] - BSA and Azide free (A278314).

Anti-NME1 Antibody [NME1/2737] (A277726)

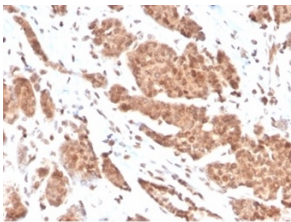
Specifications continued:

Disclaimer: This product is for research use only. It is not intended for diagnostic or therapeutic use.

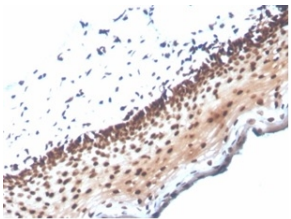
Images:



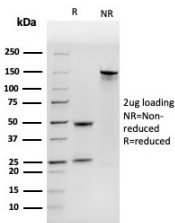
Western blot analysis of (Lane 1) A549 cell line lysate, (Lane 2) PC3 cell line lysate, and (Lane 3) K562 cell line lysate using Anti-NME1 Antibody [NME1/2737].



Immunohistochemical analysis of formalin-fixed, paraffin-embedded human breast carcinoma tissue using Anti-NME1 Antibody [NME1/2737].



Immunohistochemical analysis of formalin-fixed, paraffin-embedded human cervix tissue using Anti-NME1 Antibody [NME1/2737].



SDS-PAGE analysis of Anti-NME1 Antibody [NME1/2737] under non-reduced and reduced conditions; showing intact IgG and intact heavy and light chains, respectively. SDS-PAGE analysis confirms the integrity and purity of the antibody.