

Anti-HSP60 Antibody [rHSPD1/6497] (A277894)

Specifications:

Name:	Anti-HSP60 Antibody [rHSPD1/6497]
Description:	Recombinant mouse monoclonal [rHSPD1/6497] antibody to HSP60.
Specificity:	This antibody recognizes a 60kDa protein, identified as the heat shock protein 60 (hsp60). Its epitope is localized between aa 383-447 of human hsp60. A wide variety of environmental and pathophysiological stressful conditions trigger the synthesis of a family of proteins known as heat shock proteins (hsp s), more appropriately called as stress response proteins (srp s). hsp60 is a potential antigen in a number of autoimmune diseases. In human arthritis and in experimentally induced arthritis in animals, disease development coincides with the development of immune reactivity directed against not only bacterial hsp60, but also against its mammalian homolog. Clone rHSPD1/6497, unlike LK2, This antibody recognizes only the mammalian (not bacterial) hsp60 and is useful in distinguishing hsp60 from mammals and bacteria.
Applications:	WB, IHC-P
Recommended Dilutions:	WB: 1-2 µg/ml, IHC-P: 1-2 µg/ml
Reactivity:	Human, Mouse, Rat, Hamster, Sheep, Rabbit, Bovine, Canine, Porcine, Monkey, Chicken
Immunogen:	Recombinant full-length human HSP60 protein.
Host:	Mouse
Clonality:	Monoclonal
Clone ID:	rHSPD1/6497
Isotype:	IgG1
Light Chains:	kappa
Conjugate:	Unconjugated
Purification:	Protein A/G chromatography.
Concentration:	200 µg/ml
Product Form:	Liquid
Formulation:	Supplied in 10mM Phosphate Buffered Saline with 0.05% BSA and 0.05% Sodium Azide.
Storage:	Shipped at 4°C. Upon delivery aliquot and store at -20°C. Avoid freeze / thaw cycles.

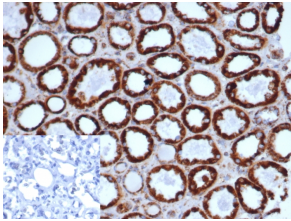
Anti-HSP60 Antibody [rHSPD1/6497] (A277894)

Specifications continued:

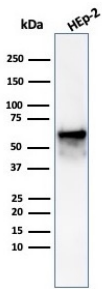
General Notes: This monoclonal antibody is also available in a different formulation without BSA and Sodium Azide - Anti-HSP60 Antibody [rHSPD1/6497] - BSA and Azide free (A278482).

Disclaimer: This product is for research use only. It is not intended for diagnostic or therapeutic use.

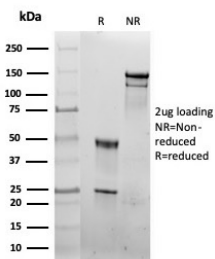
Images:



Immunohistochemical analysis of formalin-fixed, paraffin-embedded human kidney tissue using Anti-HSP60 Antibody [rHSPD1/6497]. Inset: PBS instead of the primary antibody. Secondary antibody negative control.



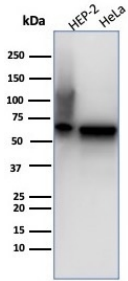
Western blot analysis of Hep2 cell line lysate using Anti-HSP60 Antibody [rHSPD1/6497].



SDS-PAGE analysis of Anti-HSP60 Antibody [rHSPD1/6497] under non-reduced and reduced conditions; showing intact IgG and intact heavy and light chains, respectively. SDS-PAGE analysis confirms the integrity and purity of the antibody.

Anti-HSP60 Antibody [rHSPD1/6497] (A277894)

Images continued:



Western blot analysis of (Lane 1) Hep2 cell line lysate and (Lane 2) HeLa cell line lysate using Anti-HSP60 Antibody [rHSPD1/6497].