

## Anti-ACTH Antibody [rCLIP/3814] (A277909)

### Specifications:

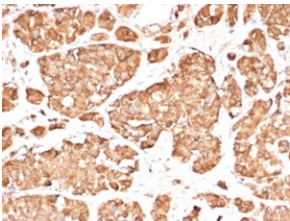
Name:	Anti-ACTH Antibody [rCLIP/3814]
Description:	Recombinant mouse monoclonal [rCLIP/3814] antibody to ACTH.
Specificity:	ACTH (same as Corticotropin) is a 39 amino acid active peptide produced by the anterior pituitary. This MAAb is specific to Synacthen (aa1-24 of ACTH); does not react with CLIP (aa17-39 of ACTH). POMC (pro-opiomelanocortin or corticotropin-lipotropin) is a 267 amino acid polypeptide hormone precursor that goes through extensive, tissue-specific posttranslational processing by convertases. POMC is cleaved into ten hormone chains named NPP, ACTH, alpha-MSH (Melanocyte Stimulating Hormone), beta-MSH, gamma-MSH, CLIP (corticotropin-like intermediary peptide), Lipotropin-beta, Lipotropin-gamma, beta-endorphin and Met-enkephalin. ACTH is also produced by cells of immune system (T-cells, B-cells, and macrophages) in response to stimuli associated with stress. Anti-ACTH is a useful marker in classification of pituitary tumors and the study of pituitary disease. It reacts with ACTH-producing cells (corticotrophs). It also may react with other tumors (e.g. some small cell carcinomas of the lung) causing paraneoplastic syndromes by secreting ACTH.
Applications:	ELISA, IHC-P
Recommended Dilutions:	IHC-P: 1-2 µg/ml
Reactivity:	Human, Mouse, Rat
Cross Reactivity:	This antibody is predicted to show a broad species reactivity.
Immunogen:	Recombinant fragment corresponding to the N terminal of human ACTH. The exact sequence is proprietary.
Host:	Mouse
Clonality:	Monoclonal
Clone ID:	rCLIP/3814
Isotype:	IgG1
Light Chains:	kappa
Conjugate:	Unconjugated
Purification:	Protein A/G chromatography.
Concentration:	200 µg/ml
Product Form:	Liquid
Formulation:	Supplied in 10mM Phosphate Buffered Saline with 0.05% BSA and 0.05% Sodium Azide.

## Anti-ACTH Antibody [rCLIP/3814] (A277909)

### Specifications continued:

Storage:	Shipped at 4°C. Upon delivery aliquot and store at -20°C. Avoid freeze / thaw cycles.
General Notes:	This monoclonal antibody is also available in a different formulation without BSA and Sodium Azide - Anti-ACTH Antibody [rCLIP/3814] - BSA and Azide free (A278497).
Disclaimer:	This product is for research use only. It is not intended for diagnostic or therapeutic use.

### Images:



Immunohistochemical analysis of formalin-fixed, paraffin-embedded human pituitary gland tissue using Anti-ACTH Antibody [rCLIP/3814] at 2 $\mu$ g/ml.