

## Anti-INSM1 Antibody [INSM1/6286R] (A278011)

### Specifications:

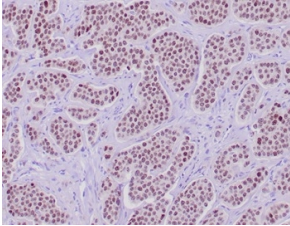
Name:	Anti-INSM1 Antibody [INSM1/6286R]
Description:	Recombinant rabbit monoclonal [INSM1/6286R] antibody to INSM1.
Specificity:	Insulinoma-associated protein 1 (INSM1) is a developmentally regulated zinc-finger transcription factor. It localizes to the nucleus and is expressed in embryonic tissues undergoing neuroendocrine differentiation. INSM1 is not expressed in normal adult tissues but can be found highly expressed in neuroendocrine tumors. INSM1 is positive in 95% of lung small cell carcinoma and 91% of lung large cell neuroendocrine carcinoma, compared with 75% and 78% with the combined panel of traditional neuroendocrine markers (synaptophysin, chromogranin, and CD56). INSM1 stains 100% of the atypical carcinoids, typical carcinoids and paragangliomas, but only 3% of adenocarcinomas and 4% of squamous cell carcinomas. Therefore, INSM1 is sensitive and specific to be a single first-line pan-neuroendocrine marker.
Applications:	IHC-P
Recommended Dilutions:	IHC-P: 1-2 µg/ml
Reactivity:	Human
Immunogen:	Recombinant fragment corresponding to the N terminus, around amino acids 81-125, of human INSM1 protein.
Host:	Rabbit
Clonality:	Monoclonal
Clone ID:	INSM1/6286R
Isotype:	IgG
Conjugate:	Unconjugated
Purification:	Protein A/G chromatography.
Concentration:	200 µg/ml
Product Form:	Liquid
Formulation:	Supplied in 10mM Phosphate Buffered Saline with 0.05% BSA and 0.05% Sodium Azide.
Storage:	Shipped at 4°C. Upon delivery aliquot and store at -20°C. Avoid freeze / thaw cycles.
General Notes:	This monoclonal antibody is also available in a different formulation without BSA and Sodium Azide - Anti-INSM1 Antibody [INSM1/6286R] - BSA and Azide free (A278599).

## Anti-INSM1 Antibody [INSM1/6286R] (A278011)

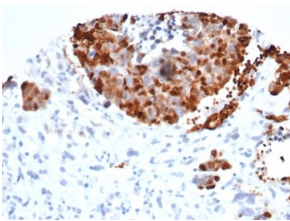
### Specifications continued:

**Disclaimer:** This product is for research use only. It is not intended for diagnostic or therapeutic use.

### Images:



Immunohistochemical analysis of formalin-fixed, paraffin-embedded human neuroendocrine tumor tissue using Anti-INSM1 Antibody [INSM1/6286R].



Immunohistochemical analysis of formalin-fixed, paraffin-embedded human bladder carcinoma tissue using Anti-INSM1 Antibody [INSM1/6286R].