

Anti-CD20 Antibody [IGEL/7015R] (A278097)

Specifications:

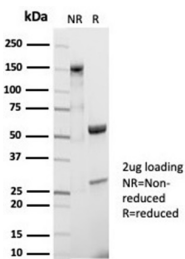
| | |
|------------------------|--|
| Name: | Anti-CD20 Antibody [IGEL/7015R] |
| Description: | Recombinant rabbit monoclonal [IGEL/7015R] antibody to CD20. |
| Specificity: | This antibody recognizes a protein of 30-33kDa, which is identified as CD20. It is a non-Ig differentiation antigen of B-cells and its expression is restricted to normal and neoplastic B-cells, being absent from all other leukocytes and tissues. CD20 is expressed by pre B-cells and persists during all stages of B-cell maturation but is lost upon terminal differentiation into plasma cells. This MAb can be used for immunophenotyping of leukemia and malignant cells, B lymphocyte detection in peripheral blood and B cell localization in tissues. It reacts with the majority of B-cells present in peripheral blood and lymphoid tissues and their derived lymphomas. In lymphoid tissue, germinal center blasts and B-immunoblasts are particularly reactive. It is a reliable antibody for ascribing a B-cell phenotype in known lymphoid tissues. Rarely, CD20-positive T-cell lymphomas have been reported. Reactivity has also been noted with Reed-Sternberg cells in cases of Hodgkin s disease, particularly of lymphocyte predominant type. |
| Applications: | WB |
| Recommended Dilutions: | WB: 1-2 µg/ml |
| Reactivity: | Human, Canine |
| Cross Reactivity: | This antibody is predicted to cross react with Monkey, Baboon, Gorilla, and Chimpanzee. |
| Immunogen: | Synthetic peptide corresponding to the C terminus, around amino acids 266-297, of human CD20 protein. The exact sequence is proprietary. |
| Host: | Rabbit |
| Clonality: | Monoclonal |
| Clone ID: | IGEL/7015R |
| Isotype: | IgG |
| Conjugate: | Unconjugated |
| Purification: | Protein A chromatography. |
| Concentration: | 200 µg/ml |
| Product Form: | Liquid |
| Formulation: | Supplied in 10mM Phosphate Buffered Saline with 0.05% BSA and 0.05% Sodium Azide. |

Anti-CD20 Antibody [IGEL/7015R] (A278097)

Specifications continued:

| | |
|----------------|--|
| Storage: | Shipped at 4°C. Upon delivery aliquot and store at -20°C. Avoid freeze / thaw cycles. |
| General Notes: | This monoclonal antibody is also available in a different formulation without BSA and Sodium Azide - Anti-CD20 Antibody [IGEL/7015R] - BSA and Azide free (A278685). |
| Disclaimer: | This product is for research use only. It is not intended for diagnostic or therapeutic use. |

Images:



SDS-PAGE analysis of Anti-CD20 Antibody [IGEL/7015R] under non-reduced and reduced conditions; showing intact IgG and intact heavy and light chains, respectively. SDS-PAGE analysis confirms the integrity and purity of the antibody.

Western blot analysis of Raji cell line lysate using Anti-CD20 Antibody [IGEL/7015R].

