

Anti-MCM2 Antibody [MCM2/3678] - BSA and Azide free (A278291)

Specifications:

Name:	Anti-MCM2 Antibody [MCM2/3678] - BSA and Azide free
Description:	Mouse monoclonal [MCM2/3678] antibody to MCM2.
Specificity:	The specificity of this monoclonal antibody to its intended target was validated by HuProt™ Array, containing more than 19,000 full-length human proteins. MCM7 is one of the highly conserved mini-chromosome maintenance proteins (MCM) that is essential for the initiation of eukaryotic genome replication. The hexameric protein complex formed by the MCM proteins is a key component of the pre-replication complex and may be involved in the formation of replication forks and in the recruitment of other DNA replication related proteins. The MCM complex consisting of this protein and MCM2, 4 and 6 proteins possesses DNA helicase activity, and may act as a DNA unwinding enzyme. Cyclin D1-dependent kinase, CDK4, is found to associate with this protein, and may regulate the binding of this protein with the tumor suppressor protein RB1/RB.
Applications:	IHC-P
Recommended Dilutions:	IHC-P: 1-2 µg/ml
Reactivity:	Human
Immunogen:	Recombinant fragment, around amino acids 650-750, of human MCM2 protein. The exact sequence is proprietary.
Host:	Mouse
Clonality:	Monoclonal
Clone ID:	MCM2/3678
Isotype:	IgG1
Light Chains:	kappa
Conjugate:	Unconjugated
Purification:	Protein A/G chromatography.
Concentration:	1 mg/ml
Product Form:	Liquid
Formulation:	Supplied in 10mM Phosphate Buffered Saline; without Sodium Azide and carrier free.
Storage:	Shipped at 4°C. Upon delivery aliquot and store at -20°C. Avoid freeze / thaw cycles.
General Notes:	This monoclonal antibody is also available in a different formulation with BSA and Sodium Azide - Anti-MCM2 Antibody [MCM2/3678] (A277703).

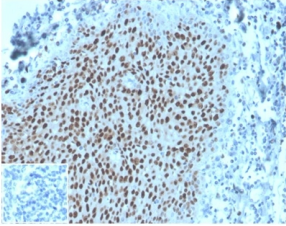
Anti-MCM2 Antibody [MCM2/3678] - BSA and Azide free (A278291)

Specifications continued:

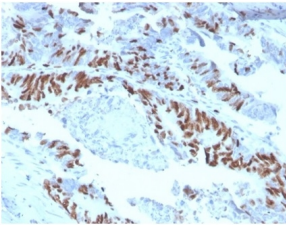
Disclaimer:

This product is for research use only. It is not intended for diagnostic or therapeutic use.

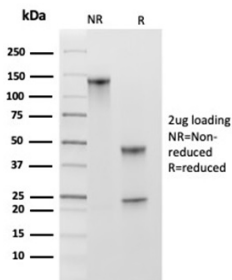
Images:



Immunohistochemical analysis of formalin-fixed, paraffin-embedded human tonsil tissue using Anti-MCM2 Antibody [MCM2/3678]. Inset: PBS instead of the primary antibody. Secondary antibody negative control.



Immunohistochemical analysis of formalin-fixed, paraffin-embedded human colon carcinoma tissue using Anti-MCM2 Antibody [MCM2/3678].



SDS-PAGE analysis of Anti-MCM2 Antibody [MCM2/3678] under non-reduced and reduced conditions; showing intact IgG and intact heavy and light chains, respectively. SDS-PAGE analysis confirms the integrity and purity of the antibody.