

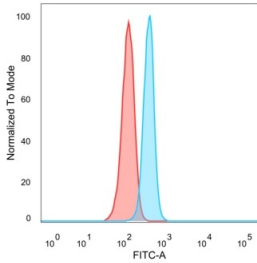
## Anti-Bcl-6 Antibody [PCRP-BCL6-1D3] - BSA and Azide free (A278363)

### Specifications:

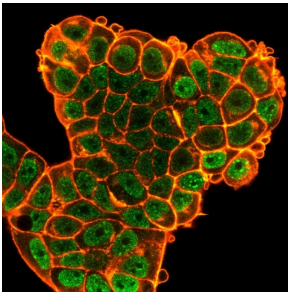
Name:	Anti-Bcl-6 Antibody [PCRP-BCL6-1D3] - BSA and Azide free
Description:	Mouse monoclonal [PCRP-BCL6-1D3] antibody to Bcl-6.
Specificity:	Bcl-6 is an important prognostic marker in diffuse large B-cell lymphomas (DLBCL), where CD10, bcl-6 and MUM1/IRF4 are used to identify germinal center and activated B-cell phenotypes. Bcl-6 can be valuable in distinguishing classical Hodgkin lymphoma from nodular lymphocyte predominant Hodgkin lymphoma (NLPHL). The Reed-Sternberg cells of classical Hodgkin lymphoma are bcl-6 negative whereas the large ( L&H ) cells of NLPHL are bcl-6 positive. In contrast, anti-Bcl-6 rarely stains mantle-cell lymphoma and MALT lymphoma.
Applications:	Flow Cytometry, IF
Recommended Dilutions:	Flow Cytometry: 1-2 µg/million cells, IF: 1-2 µg/ml
Reactivity:	Human
Cross Reactivity:	This antibody is predicted to cross react with Mouse and Rat.
Immunogen:	Recombinant full-length human Bcl-6 protein.
Host:	Mouse
Clonality:	Monoclonal
Clone ID:	PCRP-BCL6-1D3
Isotype:	IgG2b
Conjugate:	Unconjugated
Purification:	Protein A/G chromatography.
Concentration:	1 mg/ml
Product Form:	Liquid
Formulation:	Supplied in 10mM Phosphate Buffered Saline; without Sodium Azide and carrier free.
Storage:	Shipped at 4°C. Upon delivery aliquot and store at -20°C. Avoid freeze / thaw cycles.
General Notes:	This monoclonal antibody is also available in a different formulation with BSA and Sodium Azide - Anti-Bcl-6 Antibody [PCRP-BCL6-1D3] (A277775).
Disclaimer:	This product is for research use only. It is not intended for diagnostic or therapeutic use.

# Anti-Bcl-6 Antibody [PCRP-BCL6-1D3] - BSA and Azide free (A278363)

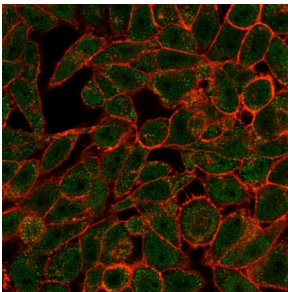
## Images:



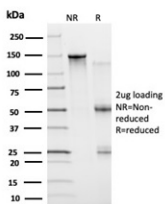
Flow cytometric analysis of PFA-fixed HeLa cells using Anti-Bcl-6 Antibody [PCRP-BCL6-1D3] followed by Goat Anti-Mouse IgG (CF® 488) (Blue). Unstained cells (Red).



Immunofluorescent analysis of PFA-fixed MCF-7 cells stained with Anti-Bcl-6 Antibody [PCRP-BCL6-1D3] followed by Goat Anti-Mouse IgG (CF® 488) (Green). CF® 640A Phalloidin (Red).



Immunofluorescent analysis of HeLa cells stained with Anti-Bcl-6 Antibody [PCRP-BCL6-1D3] followed by Goat Anti-Mouse IgG (CF® 488) (Green). CF® 640A Phalloidin (Red).



SDS-PAGE analysis of Anti-Bcl-6 Antibody [PCRP-BCL6-1D3] under non-reduced and reduced conditions; showing intact IgG and intact heavy and light chains, respectively. SDS-PAGE analysis confirms the integrity and purity of the antibody.