

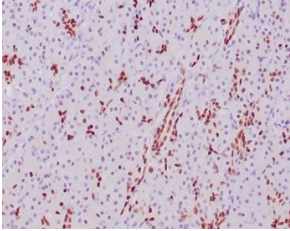
Anti-SOX9 Antibody [SOX9/2387] - BSA and Azide free (A278388)

Specifications:

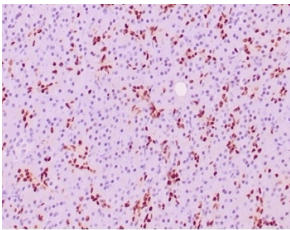
Name:	Anti-SOX9 Antibody [SOX9/2387] - BSA and Azide free
Description:	Mouse monoclonal [SOX9/2387] antibody to SOX9.
Specificity:	Sox genes comprise a family of genes that are related to the mammalian sex-determining gene SRY. These genes similarly contain sequences that encode for the HMG-box domain, which is responsible for the sequence-specific DNA-binding activity. Sox genes encode putative transcriptional regulators implicated in the decision of cell fates during development and the control of diverse developmental processes. SOX9 plays an important role in the normal skeletal development. It may regulate the expression of other genes involved in chondrogenesis by acting as a transcription factor for these genes.
Applications:	WB, IHC-P
Recommended Dilutions:	WB: 1-2 µg/ml, IHC-P: 1-2 µg/ml
Reactivity:	Human
Immunogen:	Recombinant fragment, around amino acids 393-508, of human SOX9 protein. The exact sequence is proprietary.
Host:	Mouse
Clonality:	Monoclonal
Clone ID:	SOX9/2387
Isotype:	IgG1
Light Chains:	kappa
Conjugate:	Unconjugated
Purification:	Protein A/G chromatography.
Concentration:	1 mg/ml
Product Form:	Liquid
Formulation:	Supplied in 10mM Phosphate Buffered Saline; without Sodium Azide and carrier free.
Storage:	Shipped at 4°C. Upon delivery aliquot and store at -20°C. Avoid freeze / thaw cycles.
General Notes:	This monoclonal antibody is also available in a different formulation with BSA and Sodium Azide - Anti-SOX9 Antibody [SOX9/2387] (A277800).
Disclaimer:	This product is for research use only. It is not intended for diagnostic or therapeutic use.

Anti-SOX9 Antibody [SOX9/2387] - BSA and Azide free (A278388)

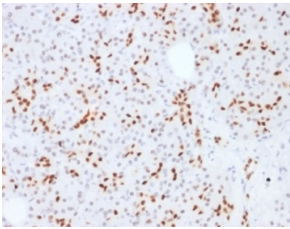
Images:



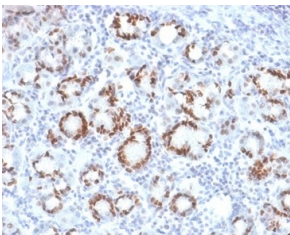
Immunohistochemical analysis of formalin-fixed, paraffin-embedded human pancreas tissue using Anti-SOX9 Antibody [SOX9/2387] at 2 μ g/ml.



Immunohistochemical analysis of formalin-fixed, paraffin-embedded human pancreas tissue using Anti-SOX9 Antibody [SOX9/2387] at 2 μ g/ml.



Immunohistochemical analysis of formalin-fixed, paraffin-embedded human pancreas tissue using Anti-SOX9 Antibody [SOX9/2387] at 2 μ g/ml.



Immunohistochemical analysis of formalin-fixed, paraffin-embedded human gastric carcinoma tissue using Anti-SOX9 Antibody [SOX9/2387] at 2 μ g/ml.