

## Anti-TIM3 Antibody [TIM3/4024] - BSA and Azide free (A278421)

### Specifications:

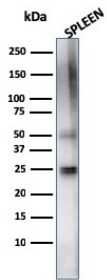
Name:	Anti-TIM3 Antibody [TIM3/4024] - BSA and Azide free
Description:	Mouse monoclonal [TIM3/4024] antibody to TIM3.
Specificity:	TIMs are type I transmembrane glycoproteins with one Ig-like V-type domain and a Ser/Thr-rich mucin stalk. TIM-3 is expressed on the surface of effector T cell tonsil, lymph node or spleen. Is (CD4+Th1 and CD8+Tc1) but not on helper T cells (CD4+Th2 and CD8+Tc2). In chronic inflammation, autoimmune disorders, and some cancers, TIM-3 is upregulated on several other hematopoietic cell types. The Ig domain of TIM-3 interacts with a ligand on resting but not activated Th1 and Th2 cells. The glycosylated Ig domain of TIM-3 binds cell-associated galectin-9. This induces TIM-3 Tyr phosphorylation and pro-apoptotic signaling. TIM-3 functions as a negative regulator of Th1 cell activity. Its blockade results in increased IFN-gamma production, Th1 cell proliferation and cytotoxicity, regulatory T cell development, and increases in macrophage and neutrophil infiltration into sites of inflammation.
Applications:	WB, IHC-P
Recommended Dilutions:	WB: 1-2 µg/ml, IHC-P: 1-2 µg/ml
Reactivity:	Human
Immunogen:	Recombinant fragment, around amino acids 22-202, of human TIM3 protein. The exact sequence is proprietary.
Host:	Mouse
Clonality:	Monoclonal
Clone ID:	TIM3/4024
Isotype:	IgG2b
Light Chains:	kappa
Conjugate:	Unconjugated
Purification:	Protein A/G chromatography.
Concentration:	1 mg/ml
Product Form:	Liquid
Formulation:	Supplied in 10mM Phosphate Buffered Saline; without Sodium Azide and carrier free.
Storage:	Shipped at 4°C. Upon delivery aliquot and store at -20°C. Avoid freeze / thaw cycles.
General Notes:	This monoclonal antibody is also available in a different formulation with BSA and Sodium Azide - Anti-TIM3 Antibody [TIM3/4024] (A277833).

## Anti-TIM3 Antibody [TIM3/4024] - BSA and Azide free (A278421)

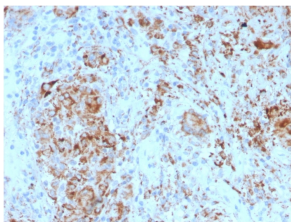
### Specifications continued:

**Disclaimer:** This product is for research use only. It is not intended for diagnostic or therapeutic use.

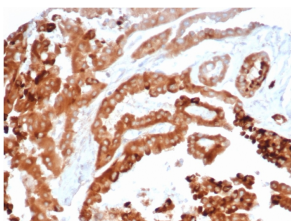
### Images:



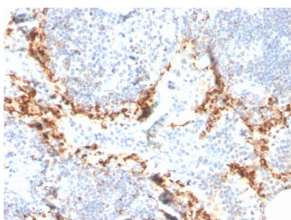
Western blot analysis of human spleen tissue lysate using Anti-TIM3 Antibody [TIM3/4024].



Immunohistochemical analysis of formalin-fixed, paraffin-embedded human lymph node tissue using Anti-TIM3 Antibody [TIM3/4024].



Immunohistochemical analysis of formalin-fixed, paraffin-embedded human renal carcinoma tissue using Anti-TIM3 Antibody [TIM3/4024].



Immunohistochemical analysis of formalin-fixed, paraffin-embedded human lymph node tissue using Anti-TIM3 Antibody [TIM3/4024].