

# Anti-alpha Fetoprotein Antibody [AFP/7007R] - BSA and Azide free (A278560)

## Specifications:

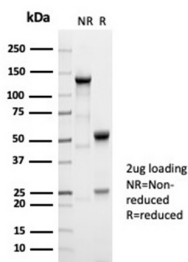
Name:	Anti-alpha Fetoprotein Antibody [AFP/7007R] - BSA and Azide free
Description:	Recombinant rabbit monoclonal [AFP/7007R] antibody to alpha Fetoprotein.
Specificity:	It recognizes an oncofetal glycoprotein with a single chain of 70kDa, which is identified as alpha fetoprotein (AFP). This MAb is highly specific to AFP and shows no cross-reaction with other oncofetal antigens or serum albumin. The yolk sac and the liver produce AFP during fetal life. AFP expression in adults is often associated with hepatoma or teratoma. However, hereditary persistence of alpha-fetoprotein may also be found in individuals with no obvious pathology. The protein is thought to be the fetal counterpart of serum albumin, and the AFP and albumin genes are present in tandem in the same transcriptional orientation on chromosome 4. AFP is found in monomeric as well as dimeric and trimeric forms, and binds copper, nickel, fatty acids and bilirubin. The level of AFP in amniotic fluid is used to measure renal loss of protein to screen for spinal bifida and anencephaly.
Applications:	IHC-P
Recommended Dilutions:	IHC-P: 1-2 µg/ml
Reactivity:	Human
Immunogen:	Recombinant full-length human alpha Fetoprotein.
Host:	Rabbit
Clonality:	Monoclonal
Clone ID:	AFP/7007R
Isotype:	IgG
Conjugate:	Unconjugated
Purification:	Protein A/G chromatography.
Concentration:	1 mg/ml
Product Form:	Liquid
Formulation:	Supplied in 10mM Phosphate Buffered Saline; without Sodium Azide and carrier free.
Storage:	Shipped at 4°C. Upon delivery aliquot and store at -20°C. Avoid freeze / thaw cycles.
General Notes:	This monoclonal antibody is also available in a different formulation with BSA and Sodium Azide - Anti-alpha Fetoprotein Antibody [AFP/7007R] (A277972).

# Anti-alpha Fetoprotein Antibody [AFP/7007R] - BSA and Azide free (A278560)

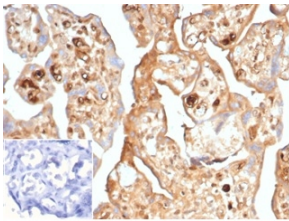
## Specifications continued:

Disclaimer: This product is for research use only. It is not intended for diagnostic or therapeutic use.

## Images:



SDS-PAGE analysis of Anti-alpha Fetoprotein Antibody [AFP/7007R] under non-reduced and reduced conditions; showing intact IgG and intact heavy and light chains, respectively. SDS-PAGE analysis confirms the integrity and purity of the antibody.



Immunohistochemical analysis of formalin-fixed, paraffin-embedded human placenta using Anti-alpha Fetoprotein Antibody [AFP/7007R] at 2 µg/ml in PBS for 30 minutes at room temperature. Inset: PBS instead of the primary antibody. Secondary antibody negative control.