

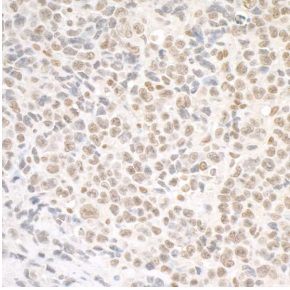
## Anti-SMC1A Antibody (A295225)

### Specifications:

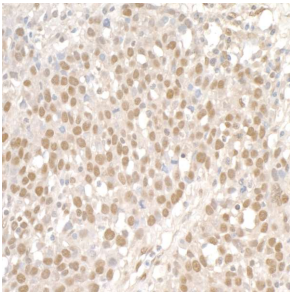
Name:	Anti-SMC1A Antibody
Description:	Rabbit polyclonal antibody to SMC1A.
Applications:	WB, IP, IHC
Recommended Dilutions:	IHC: 1:2,000-1:10,000, IP: 2-10 µg / 1 mg lysate, WB: 1:2,000-1:10,000
Reactivity:	Human, Mouse
Immunogen:	Synthetic peptide within amino acids 1175 and the C-terminus of human SMC1A (NP_006297. 2).
Host:	Rabbit
Clonality:	Polyclonal
Isotype:	IgG
Conjugate:	Unconjugated
Purification:	Antigen affinity purification.
Concentration:	1 mg/ml
Product Form:	Liquid
Formulation:	Supplied in Tris-Citrate/Phosphate Buffer, pH 7-8, with 0.09% Sodium Azide.
Storage:	Shipped at 4°C. Upon delivery aliquot and store at -20°C. Avoid freeze / thaw cycles.
General Notes:	This antibody was affinity purified using the immunising peptide immobilized on solid support. Immunoglobulin concentration was determined by extinction coefficient: absorbance at 280 nm of 1.4 equals 1.0 mg of IgG.
Disclaimer:	This product is for research use only. It is not intended for diagnostic or therapeutic use.

## Anti-SMC1A Antibody (A295225)

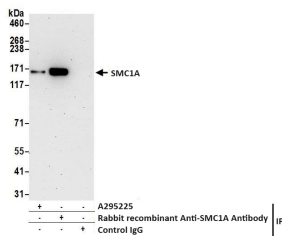
### Images:



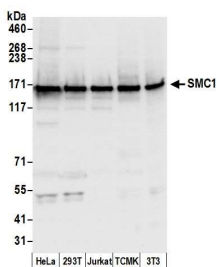
Sample: FFPE section of mouse colon carcinoma CT26. Antibody: Anti-SMC1A Antibody (A295225) was used at a dilution of 1:5,000 (0.2 µg/ml). Detection: DAB.



Sample: FFPE section of human ovarian carcinoma. Antibody: Anti-SMC1A Antibody (A295225) was used at a dilution of 1:5,000 (0.2 µg/ml). Detection: DAB.



Samples: Whole cell lysate (1.0 mg per IP reaction; 20% of IP loaded) from HeLa cells prepared using NETN lysis buffer. Antibodies: Anti-SMC1A Antibody (A295225) was used for IP at 6 µg per reaction. SMC1A was also immunoprecipitated with a rabbit Anti-SMC1A recombinant monoclonal antibody. For blotting immunoprecipitated SMC1A, the Anti-SMC1A recombinant monoclonal antibody was used at 1:1000. Detection: Chemiluminescence with an exposure time of 10 seconds.



Samples: Whole cell lysate (50 µg) from HeLa, HEK293T, Jurkat, mouse TCMK-1, and mouse NIH 3T3 cells prepared using NETN lysis buffer. Antibody: Anti-SMC1A Antibody (A295225) was used for WB at 0.1 µg/ml. Detection: Chemiluminescence with an exposure time of 3 seconds.