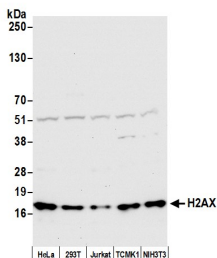


Anti-Histone H2A.X Antibody (A295246)

Specifications:

Name:	Anti-Histone H2A.X Antibody
Description:	Rabbit polyclonal antibody to Histone H2A.X.
Applications:	WB, IHC, ICC, ICC/IF
Recommended Dilutions:	ICC/IF: 1:400-1:800, WB: 1:5,000-1:25,000
Reactivity:	Human, Mouse
Immunogen:	Synthetic peptide corresponding to the C-terminus of human Histone H2A.X.
Host:	Rabbit
Clonality:	Polyclonal
Isotype:	IgG
Conjugate:	Unconjugated
Purification:	Antigen affinity purification.
Concentration:	1 mg/ml
Product Form:	Liquid
Formulation:	Supplied in Tris-Citrate/Phosphate Buffer, pH 7-8, with 0.09% Sodium Azide.
Storage:	Shipped at 4°C. Upon delivery aliquot and store at -20°C. Avoid freeze / thaw cycles.
General Notes:	This antibody was affinity purified using the immunising peptide immobilized on solid support. Immunoglobulin concentration was determined by extinction coefficient: absorbance at 280 nm of 1.4 equals 1.0 mg of IgG.
Disclaimer:	This product is for research use only. It is not intended for diagnostic or therapeutic use.

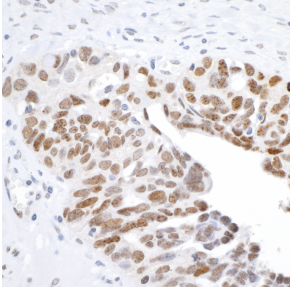
Images:



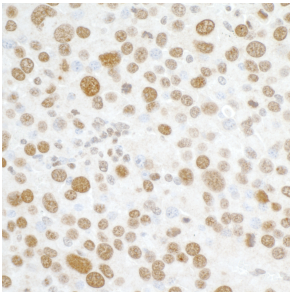
Samples: Whole cell lysate (50 µg) from HeLa, HEK293T, Jurkat, TCMK-1, and NIH 3T3 cells prepared using NETN lysis buffer. Antibody: Anti-Histone H2A.X Antibody (A295246) was used for WB at 0.1 µg/ml. Detection: Chemiluminescence with an exposure time of 10 seconds.

Anti-Histone H2A.X Antibody (A295246)

Images continued:



Sample: FFPE section of human ovarian carcinoma. Antibody: Anti-Histone H2A.X Antibody (A295246) was used at a dilution of 1:5,000 (0.2 µg/ml). Detection: DAB.



Sample: FFPE section of mouse renal cell carcinoma. Antibody: Anti-Histone H2A.X Antibody (A295246) was used at a dilution of 1:5,000 (0.2 µg/ml). Detection: DAB.



Sample: FFPE section of HCT 116 cell line. Antibody: Anti-Histone H2A.X Antibody (A295246) was used at a dilution of 1:5,000 (0.2 µg/ml). Detection: DAB.