

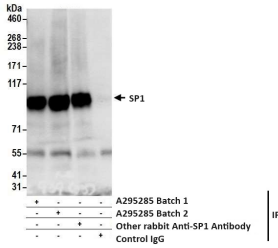
Anti-SP1 Antibody (A295285)

Specifications:

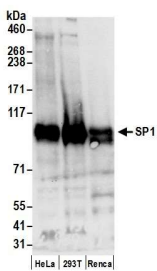
Name:	Anti-SP1 Antibody
Description:	Rabbit polyclonal antibody to SP1.
Applications:	WB, IP, IHC, ChIP-Seq
Recommended Dilutions:	ChIP-Seq: 4 µg / 30 µg chromatin, IHC: 1:2,000-1:10,000, IP: 2-10 µg / 1 mg lysate, WB: 1:2,000-1:10,000
Reactivity:	Human, Mouse
Immunogen:	Synthetic peptide within amino acids 750 and the C-terminus of human SP1 (XP_028606.4).
Host:	Rabbit
Clonality:	Polyclonal
Isotype:	IgG
Conjugate:	Unconjugated
Purification:	Antigen affinity purification.
Concentration:	200 µg/ml
Product Form:	Liquid
Formulation:	Supplied in Tris-Buffered Saline with 0.1% BSA and 0.09% Sodium Azide.
Storage:	Shipped at 4°C. Upon delivery aliquot and store at -20°C. Avoid freeze / thaw cycles.
General Notes:	This antibody was affinity purified using the immunising peptide immobilized on solid support. Immunoglobulin concentration was determined by extinction coefficient: absorbance at 280 nm of 1.4 equals 1.0 mg of IgG.
Disclaimer:	This product is for research use only. It is not intended for diagnostic or therapeutic use.

Anti-SP1 Antibody (A295285)

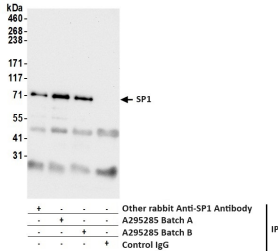
Images:



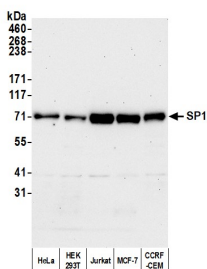
Samples: Whole cell lysate (0.5 or 1.0 mg per IP reaction; 20% of IP loaded) from HeLa cells prepared using NETN lysis buffer. Antibodies: Anti-SP1 Antibody (A295285) was used for IP at 6 μ g per reaction. SP1 was also immunoprecipitated by a previous lot of this antibody and another anti-SP1 antibody. For blotting immunoprecipitated SP1, Anti-SP1 Antibody (A295285) was used at 1 μ g/ml. Detection: Chemiluminescence with an exposure time of 10 seconds.



Samples: Whole cell lysate (50 μ g) from HeLa, HEK293T, and mouse Renca cells prepared using NETN lysis buffer. Antibody: Anti-SP1 Antibody (A295285) was used for WB at 0.1 μ g/ml. Detection: Chemiluminescence with an exposure time of 10 seconds.



Samples: Whole cell lysate (1.0 mg per IP reaction; 20% of IP loaded) from HEK293T cells prepared using NETN lysis buffer. Antibodies: Anti-SP1 Antibody (A295285) was used for IP at 6 μ g per reaction. SP1 was also immunoprecipitated by a previous lot of this antibody and a second antibody against a different epitope of SP1. For blotting immunoprecipitated SP1, Anti-SP1 Antibody (A295285) was used at 0.2 μ g/ml. Detection: Chemiluminescence with an exposure time of 30 seconds.



Samples: Whole cell lysate (50 μ g) from HeLa, HEK293T, Jurkat, MCF-7, and CCRF-CEM cells prepared using NETN lysis buffer. Antibody: Anti-SP1 Antibody (A295285) was used for WB at 0.1 μ g/ml. Detection: Chemiluminescence with an exposure time of 3 minutes.