

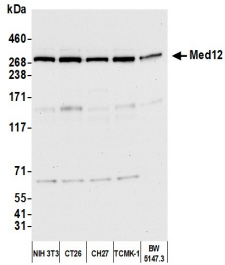
## Anti-MED12 Antibody (A295806)

### Specifications:

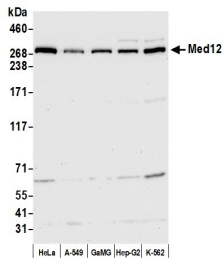
Name:	Anti-MED12 Antibody
Description:	Rabbit polyclonal antibody to MED12.
Applications:	WB, IP, IHC
Recommended Dilutions:	IHC: 1:500-1:2,000, IP: 2-10 µg / 1 mg lysate, WB: 1:2,000-1:10,000
Reactivity:	Human, Mouse
Immunogen:	Synthetic peptide within amino acids 2127 and the C-terminus of human MED12 (NP_005111. 2).
Host:	Rabbit
Clonality:	Polyclonal
Isotype:	IgG
Conjugate:	Unconjugated
Purification:	Antigen affinity purification.
Concentration:	1 mg/ml
Product Form:	Liquid
Formulation:	Supplied in Tris-Citrate/Phosphate Buffer, pH 7-8, with 0.09% Sodium Azide.
Storage:	Shipped at 4°C. Upon delivery aliquot and store at -20°C. Avoid freeze / thaw cycles.
General Notes:	This antibody was affinity purified using the immunising peptide immobilized on solid support. Immunoglobulin concentration was determined by extinction coefficient: absorbance at 280 nm of 1.4 equals 1.0 mg of IgG.
Disclaimer:	This product is for research use only. It is not intended for diagnostic or therapeutic use.

## Anti-MED12 Antibody (A295806)

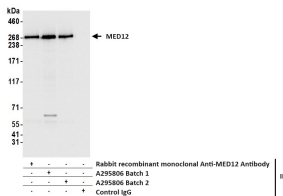
### Images:



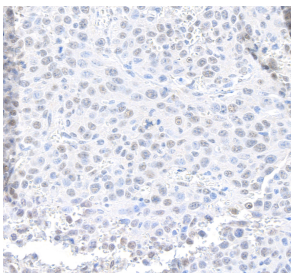
Samples: Whole cell lysate (10 µg) from NIH 3T3, CT26, CH27, TCMK-1, and BW5147.3 cells prepared using NETN lysis buffer. Antibody: Anti-MED12 Antibody (A295806) was used for WB at 0.04 µg/ml. Detection: Chemiluminescence with an exposure time of 10 seconds.



Samples: Whole cell lysate (10 µg) from HeLa, A-549, GaMG, Hep-G2, and K-562 cells prepared using NETN lysis buffer. Antibody: Anti-MED12 Antibody (A295806) was used for WB at 0.04 µg/ml. Detection: Chemiluminescence with an exposure time of 10 seconds.



Samples: Whole cell lysate (1.0 mg per IP reaction; 20% of IP loaded) from HeLa cells prepared using NETN lysis buffer. Antibodies: Anti-MED12 Antibody (A295806) was used for IP at 6 µg per reaction. MED12 was also immunoprecipitated by a previous lot of this antibody and a second antibody against a different epitope of MED12. For blotting immunoprecipitated MED12, Anti-MED12 Antibody (A295806) was used at 0.04 µg/ml. Detection: Chemiluminescence with an exposure time of 1 second.



Sample: FFPE section of mouse renal cell carcinoma. Antibody: Anti-MED12 Antibody (A295806) was used at a dilution of 1:1,000 (1 µg/ml). Detection: DAB.