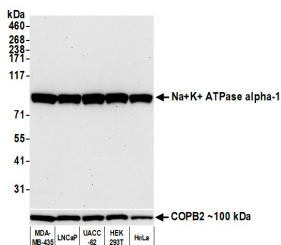


Anti-ATP1A1 Antibody [464.6] (A300665)

Specifications:

Name:	Anti-ATP1A1 Antibody [464.6]
Description:	Mouse monoclonal [464.6] antibody to ATP1A1.
Applications:	WB, IP, IHC, ICC
Recommended Dilutions:	ICC: 1:100-1:500, IHC: 1:100-1:500, IP: 6 µl / 1 mg lysate, WB: 1:1,000
Reactivity:	Human, Mouse
Immunogen:	Purified native full-length human ATP1A1.
Host:	Mouse
Clonality:	Monoclonal
Clone ID:	464.6
Isotype:	IgG
Conjugate:	Unconjugated
Purification:	Antigen affinity purification.
Concentration:	1 mg/ml
Product Form:	Liquid
Formulation:	Supplied in Phosphate Buffered Saline with 0.09% Sodium Azide.
Storage:	Shipped at 4°C. Upon delivery aliquot and store at -20°C. Avoid freeze / thaw cycles.
Disclaimer:	This product is for research use only. It is not intended for diagnostic or therapeutic use.

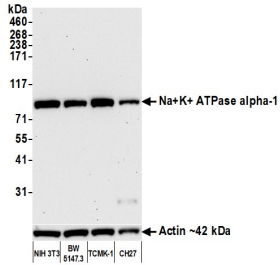
Images:



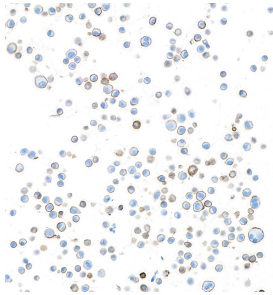
Samples: Whole cell lysate (10 µg) from MDA-MB-435, LNCaP, UACC-62, HEK293T, and HeLa cells prepared using NETN lysis buffer. Antibody: Anti-ATP1A1 Antibody [464.6] (A300665) was used at 1:1000. Secondary: HRP-conjugated goat anti-mouse IgG. Detection: Chemiluminescence with an exposure time of 30 seconds. Lower Panel: Rabbit anti-COPB2 antibody.

Anti-ATP1A1 Antibody [464.6] (A300665)

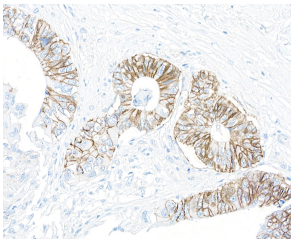
Images continued:



Samples: Whole cell lysate (10 µg) from NIH 3T3, BW5147.3, TCMK-1, and CH27 cells prepared using NETN lysis buffer. Antibody: Anti-ATP1A1 Antibody [464.6] (A300665) was used at 1:1000. Secondary: HRP-conjugated goat anti-mouse IgG. Detection: Chemiluminescence with an exposure time of 30 seconds. Lower Panel: Rabbit anti-Actin recombinant monoclonal antibody.



Sample: FFPE section of MDA-MB-435 cells. Antibody: Anti-ATP1A1 Antibody [464.6] (A300665). Secondary: HRP-conjugated goat anti-mouse IgG.



Sample: FFPE section of colon carcinoma. Antibody: Anti-ATP1A1 Antibody [464.6] (A300665). Secondary: HRP-conjugated goat anti-mouse IgG.