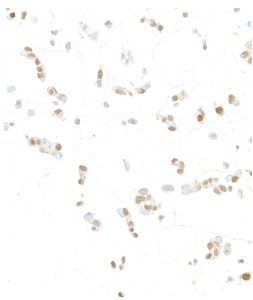


Anti-HIF-1 alpha Antibody (A302135)

Specifications:

Name:	Anti-HIF-1 alpha Antibody
Description:	Rabbit polyclonal antibody to HIF-1 alpha.
Applications:	IHC, ICC/IF
Recommended Dilutions:	ICC/IF: 1:100-1:500, IHC: 1:100-1:500
Reactivity:	Human
Immunogen:	Synthetic peptide within amino acids 775 and the C-terminus of human HIF-1 alpha.
Host:	Rabbit
Clonality:	Polyclonal
Isotype:	IgG
Conjugate:	Unconjugated
Purification:	Antigen affinity purification.
Concentration:	200 µg/ml
Product Form:	Liquid
Formulation:	Supplied in Tris-Buffered Saline with 0.1% BSA and 0.09% Sodium Azide.
Storage:	Shipped at 4°C. Upon delivery aliquot and store at -20°C. Avoid freeze / thaw cycles.
General Notes:	This antibody was affinity purified using the immunising peptide immobilized on solid support. Immunoglobulin concentration was determined by extinction coefficient: absorbance at 280 nm of 1.4 equals 1.0 mg of IgG.
Disclaimer:	This product is for research use only. It is not intended for diagnostic or therapeutic use.

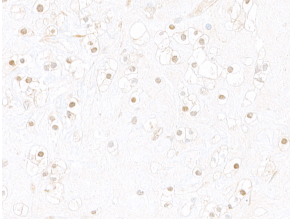
Images:



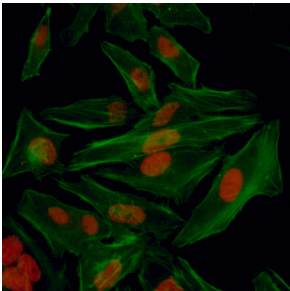
Sample: FFPE section of HepG2 cells treated with cobalt-chloride. Antibody: Anti-HIF-1 alpha Antibody (A302135) was used at a dilution of 1:100. Detection: DAB.

Anti-HIF-1 alpha Antibody (A302135)

Images continued:



Sample: FFPE section of renal cell carcinoma. Antibody: Anti-HIF-1 alpha Antibody (A302135) was used at a dilution of 1:100. Detection: DAB.



Sample: Formaldehyde-fixed asynchronous hypoxic HeLa cells. Antibody: Anti-HIF-1 alpha Antibody (A302135) was used at a dilution of 1:100. Detection: Red fluorescence.