

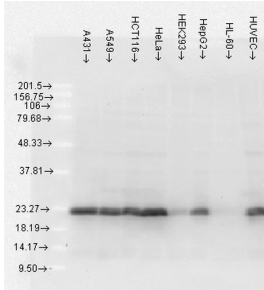
Anti-HSP27 Antibody [5D12-A12] (A304734)

Specifications:

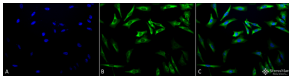
Name:	Anti-HSP27 Antibody [5D12-A12]
Description:	Mouse monoclonal [5D12-A12] antibody to HSP27.
Applications:	WB, IHC, ICC/IF, IP, ELISA
Recommended Dilutions:	WB: 1:2,000, ICC/IF: 1:100
Reactivity:	Human
Cross Reactivity:	This antibody does not cross-react with alpha B Crystallin.
Immunogen:	Full length human HSP27.
Host:	Mouse
Clonality:	Monoclonal
Clone ID:	5D12-A12
Isotype:	IgG2b
Light Chains:	kappa
Conjugate:	Unconjugated
Purification:	Protein G purification.
Concentration:	1 mg/ml
Molecular Weight:	~27 kDa
Product Form:	Liquid
Formulation:	Supplied in Phosphate Buffered Saline, pH 7.4, with 50% Glycerol and 0.09% Sodium Azide.
Storage:	Shipped at 4°C. Upon delivery aliquot and store at -20°C. Avoid freeze / thaw cycles.
Disclaimer:	This product is for research use only. It is not intended for diagnostic or therapeutic use.

Anti-HSP27 Antibody [5D12-A12] (A304734)

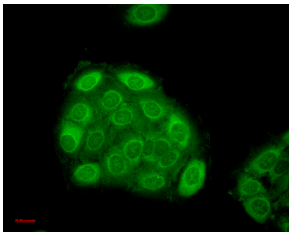
Images:



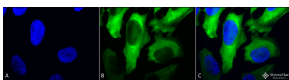
Western blot analysis of human Cell lysates showing detection of Hsp27 protein using Anti-HSP27 Antibody [5D12-A12] (A304734) at 1:1,000 for 2 hours at room temperature. Load: 15 µg. Block: 1.5% BSA for 30 minutes at room temperature. The secondary antibody used was Sheep Anti-Mouse IgG: HRP for 1 hour at room temperature.



Immunocytochemistry/Immunofluorescence analysis of human heat shocked cervical cancer cell line (HeLa), fixed in 2% formaldehyde for 20 minutes at room temperature, using Anti-HSP27 Antibody [5D12-A12] (A304734), at 1:100 for 12 hours at 4°C. The secondary antibody used was FITC Goat Anti-Mouse (green) at 1:200 for 2 hours at room temperature. Counterstain: DAPI (blue) nuclear stain at 1:40000 for 2 hours at room temperature. Localization: Cytoplasm. Nucleus. Magnification: 20x. (A) DAPI (blue) nuclear stain. (B) Anti-Hsp27 Antibody. (C) Composite. Heat Shocked at 42°C for 1h.



Immunocytochemistry/Immunofluorescence analysis of human HaCaT cells, fixed in cold 100% methanol for 10 minutes at -20°C, using Anti-HSP27 Antibody [5D12-A12] (A304734), at 1:100 for 1 hour at room temperature. The secondary antibody used was FITC Goat Anti-Mouse (green) at 1:50 for 1 hour at room temperature. Localization: Dull heterogeneous staining, some perinuclear, some nuclear and some cytoplasmic staining.



Immunocytochemistry/Immunofluorescence analysis of human heat shocked cervical cancer cell line (HeLa), fixed in 2% formaldehyde for 20 minutes at room temperature, using Anti-HSP27 Antibody [5D12-A12] (A304734), at 1:100 for 12 hours at 4°C. The secondary antibody used was FITC Goat Anti-Mouse (green) at 1:200 for 2 hours at room temperature. Counterstain: DAPI (blue) nuclear stain at 1:40000 for 2 hours at room temperature. Localization: Cytoplasm. Nucleus. Magnification: 100x. (A) DAPI (blue) nuclear stain. (B) Anti-Hsp27 Antibody. (C) Composite. Heat Shocked at 42°C for 1h.