

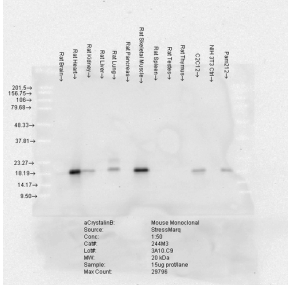
Anti-alpha B Crystallin Antibody [3A10.C9] (A304738)

Specifications:

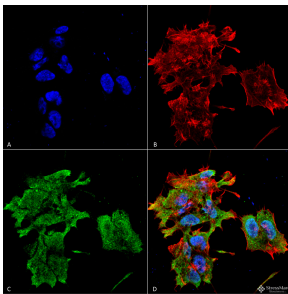
Name:	Anti-alpha B Crystallin Antibody [3A10.C9]
Description:	Mouse monoclonal [3A10.C9] antibody to alpha B Crystallin.
Specificity:	Predicted mol. weight is ~21 kDa.
Applications:	WB, IHC, ELISA, ICC/IF
Recommended Dilutions:	WB: 1:2,000, ICC/IF: 1:100
Reactivity:	Human, Rat, Bovine
Cross Reactivity:	This antibody does not cross-react with alpha A Crystallin, beta L Crystallin, beta H Crystallin, gamma Crystallin, HSP25, HSP27, or HSP47 proteins.
Immunogen:	Native Human Alpha B Crystallin.
Host:	Mouse
Clonality:	Monoclonal
Clone ID:	3A10.C9
Isotype:	IgG1
Conjugate:	Unconjugated
Purification:	Protein G purification.
Concentration:	1 mg/ml
Molecular Weight:	~20 kDa
Product Form:	Liquid
Formulation:	Supplied in Phosphate Buffered Saline, pH 7.2, with 50% Glycerol and 0.09% Sodium Azide.
Storage:	Shipped at 4°C. Upon delivery aliquot and store at -20°C. Avoid freeze / thaw cycles.
Disclaimer:	This product is for research use only. It is not intended for diagnostic or therapeutic use.

Anti-alpha B Crystallin Antibody [3A10.C9] (A304738)

Images:



Western blot analysis of rat brain, heart, kidney, liver, pancreas, skeletal muscle, spleen, testes, thymus cell lysates showing detection of Alpha B Crystallin protein using Anti-alpha B Crystallin Antibody [3A10.C9] (A304738) at 1:50 for 2 hours at room temperature. Load: 15 µg. Block: 1.5% BSA for 30 minutes at room temperature. The secondary antibody used was Sheep Anti-Mouse IgG: HRP for 1 hour at room temperature.



Immunocytochemistry/Immunofluorescence analysis of human neuroblastoma cell line (SK-N-BE, fixed in 4% formaldehyde for 15 min at room temperature, using Anti-alpha B Crystallin Antibody [3A10.C9] (A304738), at 1:100 for 60 minutes at room temperature. The secondary antibody used was Goat Anti-Mouse ATTO 488 at 1:100 for 60 minutes at room temperature. Counterstain: Phalloidin Texas Red F-Actin stain; DAPI (blue) nuclear stain at 1:1000, 1:5,000 for 60min room temperature, 5min room temperature. Magnification: 60X. (A) DAPI (blue) nuclear stain. (B) Phalloidin Texas Red F-Actin stain. (C) Alpha B Crystallin Antibody. (D) Composite.