

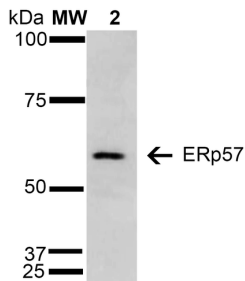
## Anti-ERp57 Antibody [4F9] (A304860)

### Specifications:

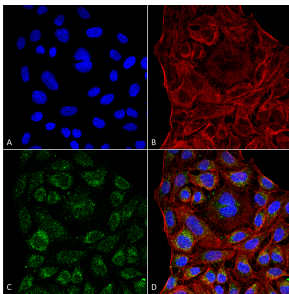
Name:	Anti-ERp57 Antibody [4F9]
Description:	Mouse monoclonal [4F9] antibody to ERp57.
Applications:	WB, ICC/IF
Recommended Dilutions:	WB: 1:1,000, ICC/IF: 1:100
Reactivity:	Human
Immunogen:	Human recombinant ERp57 (Grp58) protein corresponding to amino acids 25 - 505 (his-tagged).
Host:	Mouse
Clonality:	Monoclonal
Clone ID:	4F9
Isotype:	IgG2b
Conjugate:	Unconjugated
Purification:	Protein G purification.
Concentration:	1 mg/ml
Molecular Weight:	~57 kDa
Product Form:	Liquid
Formulation:	Supplied in Phosphate Buffered Saline, pH 7.4, with 50% Glycerol and 0.09% Sodium Azide.
Storage:	Shipped at 4°C. Upon delivery aliquot and store at -20°C. Avoid freeze / thaw cycles.
Disclaimer:	This product is for research use only. It is not intended for diagnostic or therapeutic use.

## Anti-ERp57 Antibody [4F9] (A304860)

### Images:



Western blot analysis of human Cervical cancer cell line (HeLa) lysate showing detection of 57 kDa Erp57 protein using Anti-ERp57 Antibody [4F9] (A304860) at 1:1,000 for 2 hours at room temperature. Lane 1: Molecular Weight Ladder (MW). Lane 2: HeLa cell lysate. Load: 15  $\mu$ g. Block: 5% Skim Milk in TBST. The secondary antibody used was Goat Anti-Mouse IgG: HRP at 1:1,000 for 60 minutes at room temperature. Color Development: ECL solution for 5 minutes in room temperature. Predicted/Observed Size: 57 kDa.



Immunocytochemistry/Immunofluorescence analysis of human cervical cancer cell line (HeLa), fixed in 4% formaldehyde for 15 min at room temperature, using Anti-ERp57 Antibody [4F9] (A304860), at 1:100 for 60 minutes at room temperature. The secondary antibody used was Goat Anti-Mouse ATTO 488 at 1:200 for 60 minutes at room temperature. Counterstain: Phalloidin Texas Red F-Actin stain; DAPI (blue) nuclear stain at 1:1000, 1:5,000 for 60 minutes at room temperature, 5 minutes at room temperature. Localization: Endoplasmic reticulum, Melanosome. Magnification: 60X. (A) DAPI (blue) nuclear stain. (B) Phalloidin Texas Red F-Actin stain. (C) ERp57 Antibody. (D) Composite.