

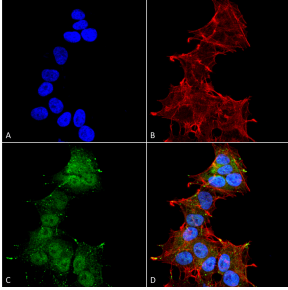
Anti-LC3A Antibody (A304958)

Specifications:

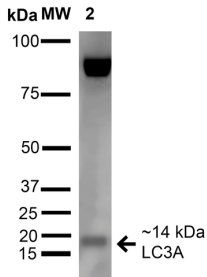
Name:	Anti-LC3A Antibody
Description:	Rabbit polyclonal antibody to LC3A.
Specificity:	Band at 50 kDa is LC3A complex.
Applications:	WB, ICC/IF
Recommended Dilutions:	WB: 1:1,000, ICC/IF: 1:100
Reactivity:	Human, Mouse, Rat
Immunogen:	Synthetic peptide from the N-terminal of Human LC3A (aa. 1-12).
Host:	Rabbit
Clonality:	Polyclonal
Isotype:	IgG
Conjugate:	Unconjugated
Purification:	Peptide affinity purification.
Concentration:	1 mg/ml
Molecular Weight:	~14 kDa
Product Form:	Liquid
Formulation:	Supplied in Phosphate Buffered Saline with 50% Glycerol and 0.09% Sodium Azide.
Storage:	Shipped at 4°C. Upon delivery aliquot and store at -20°C. Avoid freeze / thaw cycles.
Disclaimer:	This product is for research use only. It is not intended for diagnostic or therapeutic use.

Anti-LC3A Antibody (A304958)

Images:



Immunocytochemistry/Immunofluorescence analysis of human neuroblastoma cell line (SK-N-BE, fixed in 4% formaldehyde for 15 min at room temperature, using Anti-LC3A Antibody (A304958), at 1:100 for 60 minutes at room temperature. The secondary antibody used was Goat Anti-Rabbit ATTO 488 at 1:200 for 60 minutes at room temperature. Counterstain: Phalloidin Texas Red F-Actin stain; DAPI (blue) nuclear stain at 1:1000, 1:5,000 for 60 minutes at room temperature, 5 minutes at room temperature. Localization: Cytoplasm, Autophagosome, Cytoplasmic Vesicle. Magnification: 60X. (A) DAPI (blue) nuclear stain (B) Phalloidin Texas Red F-Actin stain (C) LC3A Antibody (D) Composite.



Western blot analysis of rat liver cell lysates showing detection of 14 kDa LC3A protein using Anti-LC3A Antibody (A304958) at 1:1,000 for 1 hour at room temperature. Lane 1: Molecular Weight Ladder (MW). Lane 2: rat liver cell lysates. Load: 15 μ g. Block: 5% Skim Milk in 1X TBST. The secondary antibody used was Goat Anti-Rabbit HRP at 1:2000 for 60 minutes at room temperature. Color Development: ECL solution for 6 min in room temperature. Predicted/Observed Size: 14 kDa.