

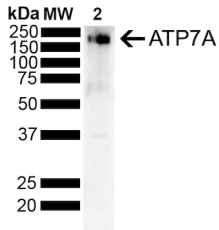
Anti-ATP7A Antibody [S60-4] (A304976)

Specifications:

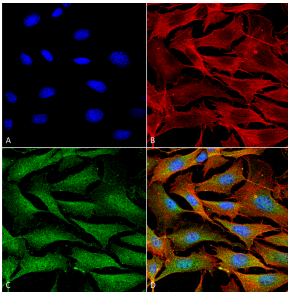
Name:	Anti-ATP7A Antibody [S60-4]
Description:	Mouse monoclonal [S60-4] antibody to ATP7A.
Specificity:	Band detected in rat brain membrane preparations.
Applications:	WB, IHC, ICC/IF, IP
Recommended Dilutions:	WB: 1:500, ICC/IF: 1:100
Reactivity:	Human, Mouse, Rat
Immunogen:	Synthetic peptide amino acids 42-61 (cytoplasmic C-terminus) of human Copper-transporting ATPase1.
Host:	Mouse
Clonality:	Monoclonal
Clone ID:	S60-4
Isotype:	IgG2b
Conjugate:	Unconjugated
Purification:	Protein G purification.
Concentration:	1 mg/ml
Molecular Weight:	~180 kDa
Product Form:	Liquid
Formulation:	Supplied in Phosphate Buffered Saline, pH 7.4, with 50% Glycerol and 0.09% Sodium Azide.
Storage:	Shipped at 4°C. Upon delivery aliquot and store at -20°C. Avoid freeze / thaw cycles.
Disclaimer:	This product is for research use only. It is not intended for diagnostic or therapeutic use.

Anti-ATP7A Antibody [S60-4] (A304976)

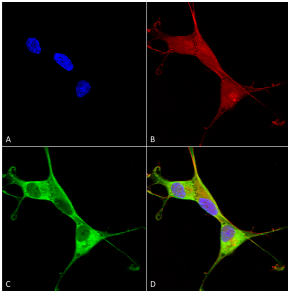
Images:



Western blot analysis of rat liver showing detection of ~180 kDa Copper Transporting ATPase 1 protein using Anti-ATP7A Antibody [S60-4] (A304976) at 1:500 for 2 hours at room temperature with shaking. Lane 1: MW Ladder. Lane 2: rat liver. Load: 10 ug. Block: 5% Skim Milk powder in TBST. The secondary antibody used was Goat anti-mouse IgG:HRP at 1:4,000 for 1 hour at room temperature with shaking. Color Development: Chemiluminescent for HRP (Moss) for 5 minutes in room temperature. Predicted/Observed Size: ~180 kDa.



Immunocytochemistry/Immunofluorescence analysis of mouse NIH 3T3, fixed in 4% formaldehyde for 15 min at room temperature, using Anti-ATP7A Antibody [S60-4] (A304976), at 1:100 for 60 minutes at room temperature. The secondary antibody used was Goat Anti-Mouse ATTO 488 at 1:200 for 60 minutes at room temperature. Counterstain: Phalloidin Texas Red F-Actin stain; DAPI (blue) nuclear stain at 1:1000, 1:5,000 for 60 minutes at room temperature, 5 minutes at room temperature. Localization: Endoplasmic Reticulum, Cytoplasm, Golgi Apparatus, Trans-Golgi Network Membrane, Cell Membrane. Magnification: 60X. (A) DAPI (blue) nuclear stain. (B) Phalloidin Texas Red F-Actin stain. (C) Copper Transporting ATPase 1 Antibody. (D) Composite.



Immunocytochemistry/Immunofluorescence analysis of human neuroblastoma cells (SH-SY5Y), fixed in 4% PFA for 15 min, using Anti-ATP7A Antibody [S60-4] (A304976), at 1:100 for overnight at 4°C with slow rocking. The secondary antibody used was AlexaFluor 488 at 1:1,000 for 1 hour at room temperature. Counterstain: Phalloidin-iFluor 647 (red) F-Actin stain; Hoechst (blue) nuclear stain at 1:800, 1.6mM for 20 minutes at room temperature. (A) Hoechst (blue) nuclear stain. (B) Phalloidin-iFluor 647 (red) F-Actin stain. (C) Copper Transporting ATPase 1 Antibody (D) Composite.