

Anti-HSP70 (acetyl Lys77) Antibody (A305054)

Specifications:

Name:	Anti-HSP70 (acetyl Lys77) Antibody
Description:	Rabbit polyclonal antibody to HSP70 (acetyl Lys77).
Specificity:	This antibody binds to acetylated lysine 77 on HSP70.
Applications:	WB, ELISA, ICC/IF, IHC
Recommended Dilutions:	WB: 1:1,000, ELISA: 1:1,000, ICC/IF: 1:60, IHC: 1:50
Reactivity:	Human, Mouse, Rat
Immunogen:	Synthetic peptide from the N-terminal of Human HSP70 Acetyl Lys77 (1-100 aa), conjugated to Keyhole Limpet Haemocyanin (KLH)
Host:	Rabbit
Clonality:	Polyclonal
Isotype:	IgG
Conjugate:	Unconjugated
Purification:	Peptide affinity purification.
Concentration:	0.5 mg/ml
Molecular Weight:	70 kDa
Product Form:	Liquid
Formulation:	Supplied in Phosphate Buffered Saline, pH 7.4, with 50% Glycerol and 0.09% Sodium Azide.
Storage:	Shipped at 4°C. Upon delivery aliquot and store at -20°C. Avoid freeze / thaw cycles.
Disclaimer:	This product is for research use only. It is not intended for diagnostic or therapeutic use.

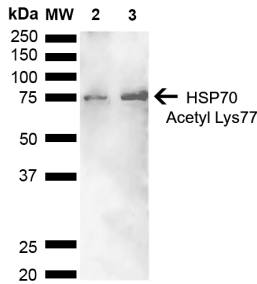
Images:



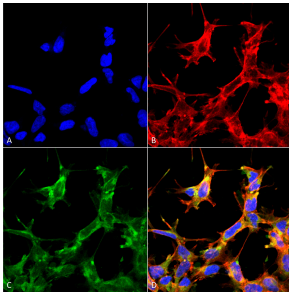
Immunohistochemistry analysis of human colon cancer, fixed in formalin and paraffin-embedded. The Primary Antibody used was Anti-HSP70 (Acetyl Lys77) Antibody (A305054) at 1:50 for 30 minutes at room temperature. Counterstain: Hematoxylin. Magnification: 20X. HRP-DAB Detection.

Anti-HSP70 (acetyl Lys77) Antibody (A305054)

Images continued:



Western blot analysis of human Cervical cancer cell line (HeLa) lysate showing detection of ~70 kDa HSP70 Acetyl Lys77 protein using Anti-HSP70 (Acetyl Lys77) Antibody (A305054) at 1:1,000 for 2 hours at room temperature. Lane 1: Molecular Weight Ladder (MW). Lane 2: Cervical Cancer cell line (HeLa) lysate. Lane 3: H2O2 Cervical Cancer cell line (HeLa) lysate. Load: 10 μ g. Block: 5% Skim Milk in 1X TBST. The secondary antibody used was Goat Anti-Rabbit HRP:IgG at 1:3000 for 1 hour at room temperature. Color Development: ECL solution for 5 minutes at room temperature. Predicted/Observed Size: ~70 kDa.



Immunocytochemistry/Immunofluorescence analysis of human embryonic kidney cells (HEK293) cultured overnight with 50 μ M H2O2, fixed in 5% formaldehyde for 5 minutes, using Anti-HSP70 (Acetyl Lys77) Antibody (A305054), at 1:60 for 30-60 min at room temperature. The secondary antibody used was Goat Anti-Rabbit Alexa Fluor 488 at 1:1500 for 30-60 min at room temperature. Counterstain: Phalloidin Alexa Fluor 633 F-Actin stain; DAPI (blue) nuclear stain at 1:250, 1:50,000 for 30-60 min at room temperature. Localization: Cytoplasmic. Magnification: 20X (2X Zoom). (A) DAPI (blue) nuclear stain. (B) Phalloidin Alex Fluor 633 F-Actin stain. (C) HSP70 Antibody (Acetyl Lys77). (D) Composite.