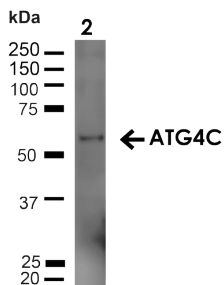


Anti-ATG4C Antibody (A305074)

Specifications:

Name:	Anti-ATG4C Antibody
Description:	Rabbit polyclonal antibody to ATG4C.
Specificity:	Predicted molecular weight at ~52.5 kDa. Observed molecular weights at ~45-60 kDa.
Applications:	WB, ICC/IF
Recommended Dilutions:	WB: 1:1,000, ICC/IF: 1:100
Reactivity:	Human, Mouse, Rat
Immunogen:	Synthetic peptide from the N-terminal of human ATG4C.
Host:	Rabbit
Clonality:	Polyclonal
Isotype:	IgG
Conjugate:	Unconjugated
Purification:	Peptide affinity purification.
Concentration:	1 mg/ml
Product Form:	Liquid
Formulation:	Supplied in Phosphate Buffered Saline with 50% Glycerol and 0.09% Sodium Azide.
Storage:	Shipped at 4°C. Upon delivery aliquot and store at -20°C. Avoid freeze / thaw cycles.
Disclaimer:	This product is for research use only. It is not intended for diagnostic or therapeutic use.

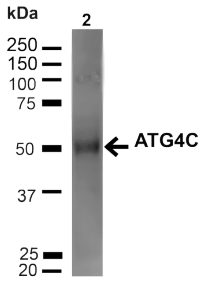
Images:



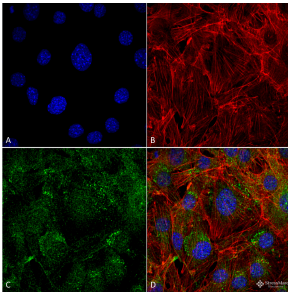
Western blot analysis of rat liver showing detection of ~52.5kDa ATG4C protein using Anti-ATG4C Antibody (A305074) at 1:1,000 for 1 hour at room temperature. Lane 1: MW Ladder. Lane 2: rat liver (20 µg). Load: 20 µg. Block: 5% milk + TBST for 1 hour at room temperature. The secondary antibody used was Goat Anti-Rabbit: HRP at 1:2000 for 1 hour at room temperature. Color Development: TMB solution for 12 min at room temperature. Predicted/Observed Size: ~52.5kDa.

Anti-ATG4C Antibody (A305074)

Images continued:



Western blot analysis of human Embryonic kidney epithelial cell line (HEK293T) lysate showing detection of ~52.5kDa ATG4C protein using Anti-ATG4C Antibody (A305074) at 1:1,000 for 1 hour at room temperature. Lane 1: MW Ladder. Lane 2: human 293T (20 µg). Load: 20 µg. Block: 5% milk + TBST for 1 hour at room temperature. The secondary antibody used was Goat Anti-Rabbit: HRP at 1:2000 for 1 hour at room temperature. Color Development: TMB solution for 12 min at room temperature. Predicted/Observed Size: ~52.5kDa.



Immunocytochemistry/Immunofluorescence analysis of mouse myoblast cell line (C2C12), fixed in 4% formaldehyde for 15 min at room temperature, using Anti-ATG4C Antibody (A305074), at 1:100 for 60 minutes at room temperature. The secondary antibody used was Goat Anti-Rabbit ATTO 488 at 1:100 for 60 minutes at room temperature. Counterstain: Phalloidin Texas Red F-Actin stain; DAPI (blue) nuclear stain at 1:1000, 1:5,000 for 60min room temperature, 5min room temperature. Localization: Cytoplasm. Magnification: 60X. (A) DAPI (blue) nuclear stain (B) Phalloidin Texas Red F-Actin stain (C) ATG4C Antibody (D) Composite.