

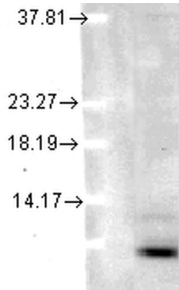
Anti-Ubiquitin Antibody [5B9-B3] (A305078)

Specifications:

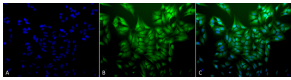
| | |
|------------------------|----------------------------------------------------------------------------------------------|
| Name: | Anti-Ubiquitin Antibody [5B9-B3] |
| Description: | Mouse monoclonal [5B9-B3] antibody to Ubiquitin. |
| Applications: | WB, ICC/IF, ELISA |
| Recommended Dilutions: | WB: 1:1,000, ICC/IF: 1:100 |
| Reactivity: | Human, Mouse, Rat, Bovine |
| Immunogen: | Native bovine ubiquitin, conjugated to KLH. |
| Host: | Mouse |
| Clonality: | Monoclonal |
| Clone ID: | 5B9-B3 |
| Isotype: | IgG2a |
| Light Chains: | kappa |
| Conjugate: | Unconjugated |
| Purification: | Protein G purification. |
| Concentration: | 1 mg/ml |
| Molecular Weight: | ~10 kDa |
| Product Form: | Liquid |
| Formulation: | Supplied in Phosphate Buffered Saline, pH 7.4, with 50% Glycerol and 0.09% Sodium Azide. |
| Storage: | Shipped at 4°C. Upon delivery aliquot and store at -20°C. Avoid freeze / thaw cycles. |
| Disclaimer: | This product is for research use only. It is not intended for diagnostic or therapeutic use. |

Anti-Ubiquitin Antibody [5B9-B3] (A305078)

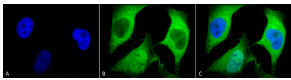
Images:



Western blot analysis of human cell lysates showing detection of Ubiquitin protein using Anti-Ubiquitin Antibody [5B9-B3] (A305078) at 1:1,000 for 2 hours at room temperature. Load: 15 µg. Block: 1.5% BSA for 30 minutes at room temperature. The secondary antibody used was Sheep Anti-Mouse IgG: HRP for 1 hour at room temperature.



Immunocytochemistry/Immunofluorescence analysis of human cervical cancer cell line (HeLa), fixed in 2% formaldehyde for 20 minutes at room temperature, using Anti-Ubiquitin Antibody [5B9-B3] (A305078), at 1:100 for 12 hours at 4°C. The secondary antibody used was FITC Goat Anti-Mouse (green) at 1:200 for 2 hours at room temperature. Counterstain: DAPI (blue) nuclear stain at 1:40000 for 2 hours at room temperature. Localization: Diffuse nuclear and cytoplasmic staining. Magnification: 20x. (A) DAPI (blue) nuclear stain. (B) Anti-Ubiquitin Antibody. (C) Composite.



Immunocytochemistry/Immunofluorescence analysis of human cervical cancer cell line (HeLa), fixed in 2% formaldehyde for 20 minutes at room temperature, using Anti-Ubiquitin Antibody [5B9-B3] (A305078), at 1:100 for 12 hours at 4°C. The secondary antibody used was FITC Goat Anti-Mouse (green) at 1:200 for 2 hours at room temperature. Counterstain: DAPI (blue) nuclear stain at 1:40000 for 2 hours at room temperature. Localization: Diffuse nuclear and cytoplasmic staining. Magnification: 100x. (A) DAPI (blue) nuclear stain. (B) Anti-Ubiquitin Antibody. (C) Composite.