

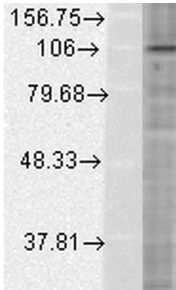
Anti-HIF-1 alpha Antibody [ESEE122] (A305080)

Specifications:

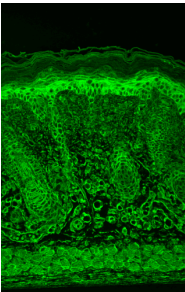
Name:	Anti-HIF-1 alpha Antibody [ESEE122]
Description:	Mouse monoclonal [ESEE122] antibody to HIF-1 alpha.
Specificity:	This antibody is specific to HIF-1 alpha.
Applications:	WB, IHC, ICC/IF, ELISA
Recommended Dilutions:	WB: 1:1,000, IHC: 1:100, ICC/IF: 1:50
Reactivity:	Human, Mouse, Rat, Bovine
Immunogen:	Recombinant fragment corresponding to amino acids 329-532 of mouse HIF-1 alpha.
Host:	Mouse
Clonality:	Monoclonal
Clone ID:	ESEE122
Isotype:	IgG1
Conjugate:	Unconjugated
Purification:	Protein G purification.
Concentration:	1 mg/ml
Molecular Weight:	~116 kDa
Product Form:	Liquid
Formulation:	Supplied in Phosphate Buffered Saline, pH 7.4, with 50% Glycerol and 0.09% Sodium Azide.
Storage:	Shipped at 4°C. Upon delivery aliquot and store at -20°C. Avoid freeze / thaw cycles.
Disclaimer:	This product is for research use only. It is not intended for diagnostic or therapeutic use.

Anti-HIF-1 alpha Antibody [ESEE122] (A305080)

Images:



Western blot analysis of human Cervical cancer cell line (HeLa) lysate showing detection of HIF1 alpha protein using Anti-HIF-1 alpha Antibody [ESEE122] (A305080) at 1:500 for 2 hours at room temperature. Load: 15 μ g. Block: 1.5% BSA for 30 minutes at room temperature. The secondary antibody used was Sheep Anti-Mouse IgG: HRP for 1 hour at room temperature.



Immunohistochemistry analysis of mouse backskin, fixed in Bouin's fixative solution and paraffin-embedded. The Primary Antibody used was Anti-HIF-1 alpha Antibody [ESEE122] (A305080) at 1:100 for 1 hour at room temperature. The secondary antibody used was FITC Goat Anti-Mouse (green) at 1:50 for 1 hour at room temperature. Localization: Membranous and cytoplasmic localization in the epidermis, positive hair follicles, muscle and dermis..