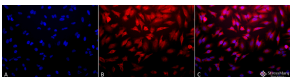


Anti-GSK3 beta Antibody (A305082)

Specifications:

Name:	Anti-GSK3 beta Antibody
Description:	Rabbit polyclonal antibody to GSK3 beta.
Applications:	WB, IHC, ICC/IF
Recommended Dilutions:	WB: 1:2,000, ICC/IF: 1:200
Reactivity:	Human, Mouse, Rat, Bovine
Immunogen:	Synthetic peptide corresponding to the sequence near the C-terminus of human GSK-3Beta.
Host:	Rabbit
Clonality:	Polyclonal
Isotype:	IgG
Conjugate:	Unconjugated
Purification:	Protein A purification.
Concentration:	1.3 mg/ml
Molecular Weight:	~47 kDa
Product Form:	Liquid
Formulation:	Supplied in Phosphate Buffered Saline, pH 7.4.
Storage:	Shipped at 4°C. Upon delivery aliquot and store at -20°C. Avoid freeze / thaw cycles.
Disclaimer:	This product is for research use only. It is not intended for diagnostic or therapeutic use.

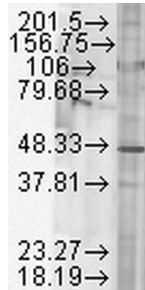
Images:



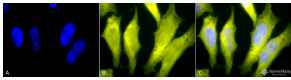
Immunocytochemistry/Immunofluorescence analysis of human heat shocked cervical cancer cell line (HeLa), fixed in 2% formaldehyde for 20 minutes at room temperature, using Anti-GSK3 beta Antibody (A305082), at 1:100 for 12 hours at 4°C. The secondary antibody used was R-PE Goat Anti-Rabbit (yellow) at 1:200 for 2 hours at room temperature. Counterstain: DAPI (blue) nuclear stain at 1:40000 for 2 hours at room temperature. Localization: Cytoplasm. Nucleus. Magnification: 20x.(A) DAPI (blue) nuclear stain. (B) Anti-GSK3beta Antibody. (C) Composite. Heat Shocked at 42°C for 1h.

Anti-GSK3 beta Antibody (A305082)

Images continued:



Western blot analysis of human Cell line lysates showing detection of GSK3 Beta protein using Anti-GSK3 beta Antibody (A305082) at 1:1,000 for 2 hours at room temperature. Load: 15 µgprotein. Block: 1.5% BSA for 30 minutes at room temperature. The secondary antibody used was Donkey Anti-Rabbit IgG: HRP for 1 hour at room temperature.



Immunocytochemistry/Immunofluorescence analysis of human heat shocked cervical cancer cell line (HeLa), fixed in 2% formaldehyde for 20 minutes at room temperature, using Anti-GSK3 beta Antibody (A305082), at 1:100 for 12 hours at 4°C. The secondary antibody used was APC Goat Anti-Rabbit (red) at 1:200 for 2 hours at room temperature. Counterstain: DAPI (blue) nuclear stain at 1:40000 for 2 hours at room temperature. Localization: Cytoplasm. Nucleus. Magnification: 100x.(A) DAPI (blue) nuclear stain. (B) Anti-GSK3beta Antibody. (C) Composite. Heat Shocked at 42°C for 1h.