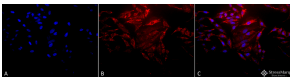


Anti-HSP60 Antibody (A305092)

Specifications:

Name:	Anti-HSP60 Antibody
Description:	Rabbit polyclonal antibody to HSP60.
Applications:	WB, IHC, IP, ELISA
Recommended Dilutions:	WB: 1:1,000, ICC/IF: 1:100
Reactivity:	Human, Mouse, Rat, Bovine, Canine, Chicken, Rabbit, Hamster
Immunogen:	Human HSP60 produced through recombinant DNA methods in E.coli.
Host:	Rabbit
Clonality:	Polyclonal
Isotype:	IgG
Conjugate:	Unconjugated
Purification:	Protein A purification.
Concentration:	1 mg/ml
Molecular Weight:	~60 kDa
Product Form:	Liquid
Formulation:	Supplied in Phosphate Buffered Saline with 50% Glycerol and 0.09% Sodium Azide.
Storage:	Shipped at 4°C. Upon delivery aliquot and store at -20°C. Avoid freeze / thaw cycles.
Disclaimer:	This product is for research use only. It is not intended for diagnostic or therapeutic use.

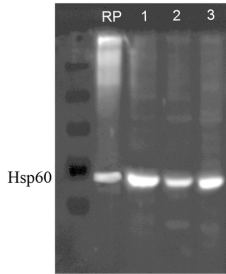
Images:



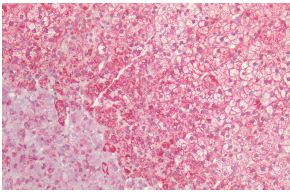
Immunocytochemistry/Immunofluorescence analysis of human heat shocked cervical cancer cell line (HeLa), fixed in 2% formaldehyde for 20 minutes at room temperature, using Anti-HSP60 Antibody (A305092), at 1:100 for 12 hours at 4°C. The secondary antibody used was APC Goat Anti-Rabbit (red) at 1:200 for 2 hours at room temperature. Counterstain: DAPI (blue) nuclear stain at 1:40000 for 2 hours at room temperature. Localization: Mitochondrion matrix. Magnification: 20x. (A) DAPI (blue) nuclear stain. (B) Anti-Hsp60 Antibody. (C) Composite. Heat Shocked at 42°C for 1h.

Anti-HSP60 Antibody (A305092)

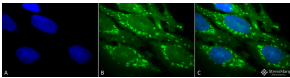
Images continued:



Western blot analysis of Human, Dog, mouse SKBR3, MDCK, and MEF cell line lysates showing detection of HSP60 protein using Anti-HSP60 Antibody (A305092) at 1:1,000. Lane 1: Recom. human Hsp60 (100ng), Lane2, 3 and 4: SKBR3 lysate (human), MDCK lysate (dog) and MEF lysate (mouse) (AI at 7.5ug).



Immunohistochemistry analysis of human adrenal, fixed in formalin and paraffin-embedded. The Primary Antibody used was Anti-HSP60 Antibody (A305092).



Immunocytochemistry/Immunofluorescence analysis of human heat shocked cervical cancer cell line (HeLa), fixed in 2% formaldehyde for 20 minutes at room temperature, using Anti-HSP60 Antibody (A305092), at 1:100 for 12 hours at 4°C. The secondary antibody used was FITC Goat Anti-Rabbit (green) at 1:200 for 2 hours at room temperature. Counterstain: DAPI (blue) nuclear stain at 1:40000 for 2 hours at room temperature. Localization: Mitochondrion matrix. Magnification: 100x.(A) DAPI (blue) nuclear stain. (B) Anti-Hsp60 Antibody. (C) Composite. Heat Shocked at 42°C for 1h.