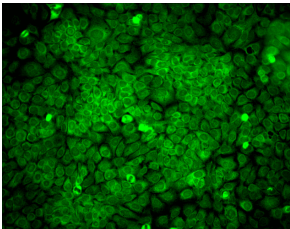


Anti-ERp57 Antibody [Map.ERp57] (A305093)

Specifications:

Name:	Anti-ERp57 Antibody [Map.ERp57]
Description:	Mouse monoclonal [Map.ERp57] antibody to ERp57.
Applications:	WB, IHC, ICC/IF, IP
Recommended Dilutions:	WB: 1:2,000, IHC: 1:100, ICC/IF: 1:100
Reactivity:	Human, Mouse, Rat, Bovine, Canine, Guinea Pig, Hamster, Monkey, Porcine, Rabbit
Immunogen:	Recombinant human ERp57 (Grp58) protein.
Host:	Mouse
Clonality:	Monoclonal
Clone ID:	Map.ERp57
Isotype:	IgG1
Conjugate:	Unconjugated
Purification:	Protein G purification.
Concentration:	1 mg/ml
Molecular Weight:	~57 kDa
Product Form:	Liquid
Formulation:	Supplied in Phosphate Buffered Saline, pH 7.4, with 50% Glycerol and 0.09% Sodium Azide.
Storage:	Shipped at 4°C. Upon delivery aliquot and store at -20°C. Avoid freeze / thaw cycles.
Disclaimer:	This product is for research use only. It is not intended for diagnostic or therapeutic use.

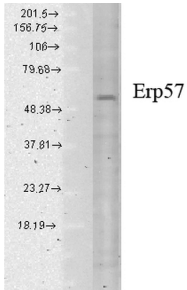
Images:



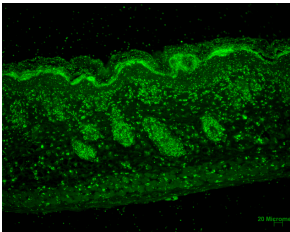
Immunocytochemistry/Immunofluorescence analysis of human HaCaT cells, fixed in cold 100% methanol for 10 minutes at -20°C, using Anti-ERp57 Antibody [Map.ERp57] (A305093), at 1:100 for 1 hour at room temperature. The secondary antibody used was FITC Goat Anti-Mouse (green) at 1:50 for 1 hour at room temperature. Localization: Cytoplasmic and perinuclear staining.

Anti-ERp57 Antibody [Map.ERp57] (A305093)

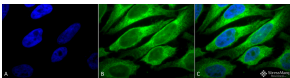
Images continued:



Western blot analysis of human cell lysates showing detection of Erp57 protein using Anti-ERp57 Antibody [Map.ERp57] (A305093) at 1:1,000 for 2 hours at room temperature. Load: 15 µg. Block: 1.5% BSA for 30 minutes at room temperature. The secondary antibody used was Sheep Anti-Mouse IgG: HRP for 1 hour at room temperature.



Immunohistochemistry analysis of mouse backskin, fixed in Bouin's fixative solution and paraffin-embedded. The Primary Antibody used was Anti-ERp57 Antibody [Map.ERp57] (A305093) at 1:100 for 1 hour at room temperature. The secondary antibody used was FITC Goat Anti-Mouse (green) at 1:50 for 1 hour at room temperature. Localization: Epidermis and Hair Follicles.



Immunocytochemistry/Immunofluorescence analysis of human heat shocked cervical cancer cell line (HeLa), fixed in 2% formaldehyde for 20 minutes at room temperature, using Anti-ERp57 Antibody [Map.ERp57] (A305093), at 1:100 for 12 hours at 4°C. The secondary antibody used was FITC Goat Anti-Mouse (green) at 1:200 for 2 hours at room temperature. Counterstain: DAPI (blue) nuclear stain at 1:40000 for 2 hours at room temperature. Localization: Endoplasmic reticulum lumen. Melanosome. Magnification: 100x. (A) DAPI (blue) nuclear stain. (B) Anti-Erp57 (Grp58) Antibody. (C) Composite. Heat Shocked at 42°C for 1h.