

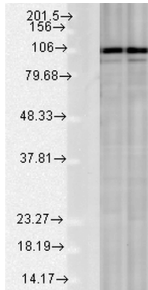
Anti-Calnexin Antibody (A305106)

Specifications:

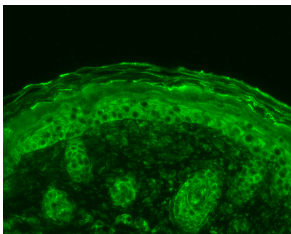
| | |
|------------------------|---|
| Name: | Anti-Calnexin Antibody |
| Description: | Rabbit polyclonal antibody to Calnexin. |
| Specificity: | This antibody detects the C-terminal domain of Calnexin. Weak detection in Chicken, Drosophila, and Xenopus tissues |
| Applications: | WB, ICC/IF, IHC |
| Recommended Dilutions: | WB: 1:1,000, IHC: 1:100, ICC/IF: 1:100 |
| Reactivity: | Human, Mouse, Rat, Bovine, Monkey, Chicken, Canine, Guinea Pig, Hamster, Porcine, Quail, Rabbit, Sheep, Drosophila, Xenopus |
| Immunogen: | Dog calnexin C-terminal synthetic peptide conjugated to KLH. Identical to human, mouse and rat calnexin sequences over these residues |
| Host: | Rabbit |
| Clonality: | Polyclonal |
| Isotype: | IgG |
| Conjugate: | Unconjugated |
| Purification: | Peptide affinity purification. |
| Concentration: | 1 mg/ml |
| Molecular Weight: | ~90 kDa |
| Product Form: | Liquid |
| Formulation: | Supplied in Phosphate Buffered Saline, pH 7.4, with 50% Glycerol and 0.09% Sodium Azide. |
| Storage: | Shipped at 4°C. Upon delivery aliquot and store at -20°C. Avoid freeze / thaw cycles. |
| Disclaimer: | This product is for research use only. It is not intended for diagnostic or therapeutic use. |

Anti-Calnexin Antibody (A305106)

Images:



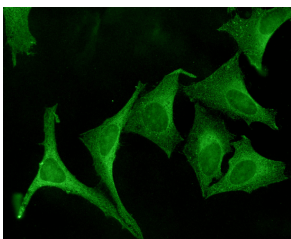
Western blot analysis of rat tissue lysates showing detection of Calnexin protein using Anti-Calnexin Antibody (A305106) at 1:1,000 for 2 hours at room temperature. Load: 15 µgprotein. Block: 1.5% BSA. The secondary antibody used was Donkey Anti-Rabbit IgG: HRP for 1 hour at room temperature.



Immunohistochemistry analysis of mouse backskin, fixed in Bouin's fixative solution. The Primary Antibody used was Anti-Calnexin Antibody (A305106) at 1:100 for 1 hour at room temperature. The secondary antibody used was FITC Goat Anti-Rabbit (green) at 1:50 for 1 hour at room temperature.



Western blot analysis of human Cervical cancer cell line (HeLa) lysate showing detection of Calnexin protein using Anti-Calnexin Antibody (A305106) at 1:1,000.



Immunocytochemistry/Immunofluorescence analysis of human cervical cancer cell line (HeLa), using Anti-Calnexin Antibody (A305106), at 1:100. The secondary antibody used was FITC Goat Anti-Rabbit (green).