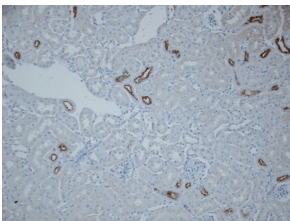


## Anti-SLC12A3 Antibody (A305115)

### Specifications:

Name:	Anti-SLC12A3 Antibody
Description:	Rabbit polyclonal antibody to SLC12A3.
Applications:	WB, IHC, ICC/IF, IEM
Recommended Dilutions:	WB: 1:1,000, IHC: 1:200
Reactivity:	Human, Mouse, Rat, Canine
Immunogen:	Produced against a synthetic peptide mapping to a segment of rat NCC (amino acids 74-95), N-terminal.
Host:	Rabbit
Clonality:	Polyclonal
Isotype:	IgG
Conjugate:	Unconjugated
Purification:	Affinity purification.
Concentration:	1 mg/ml
Molecular Weight:	~160 kDa
Product Form:	Liquid
Formulation:	Supplied in Phosphate Buffered Saline with 50% Glycerol and 0.09% Sodium Azide.
Storage:	Shipped at 4°C. Upon delivery aliquot and store at -20°C. Avoid freeze / thaw cycles.
Disclaimer:	This product is for research use only. It is not intended for diagnostic or therapeutic use.

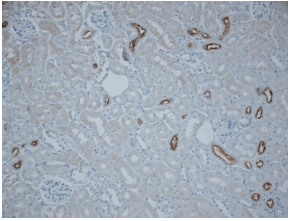
### Images:



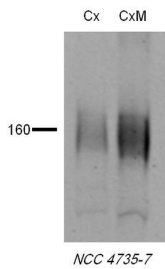
Immunohistochemistry analysis of mouse kidney tissue, fixed in paraformaldehyde and paraffin-embedded. The Primary Antibody used was Anti-SLC12A3 Antibody (A305115) at 1:1,000 for Overnight at 4°C. The secondary antibody used was Biotinylated Goat Anti-Rabbit IgG at 1:501 for 30 minutes at room temperature.

## Anti-SLC12A3 Antibody (A305115)

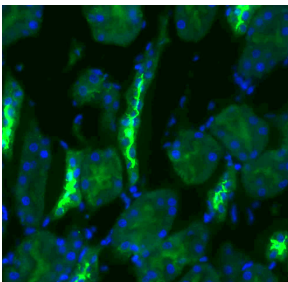
Images continued:



Immunohistochemistry analysis of mouse kidney tissue, fixed in paraformaldehyde and paraffin-embedded. The Primary Antibody used was Anti-SLC12A3 Antibody (A305115) at 1:500 for Overnight at 4°C. The secondary antibody used was Biotinylated Goat Anti-Rabbit IgG at 1:500 for 30 minutes at room temperature.



Western blot analysis of rat tissue lysates showing detection of NCC protein using Anti-SLC12A3 Antibody (A305115) at 1:1,000.



Immunohistochemistry analysis of rat kidney tissue. The Primary Antibody used was Anti-SLC12A3 Antibody (A305115) at 1:200. The secondary antibody used was FITC Goat Anti-Rabbit (green).