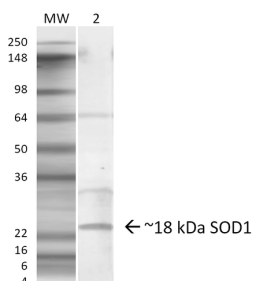


Anti-Superoxide Dismutase 1 Antibody (A305127)

Specifications:

Name:	Anti-Superoxide Dismutase 1 Antibody
Description:	Rabbit polyclonal antibody to Superoxide Dismutase 1.
Specificity:	This antibody recognises a conformation specific epitope where the dimer interface is exposed.
Applications:	WB, IHC, ELISA
Recommended Dilutions:	WB: 1:1,000
Reactivity:	Human, Mouse, Rat, Porcine
Immunogen:	C-terminal region of human SOD1, exposed dimer interface (EDI).
Host:	Rabbit
Clonality:	Polyclonal
Isotype:	IgG
Conjugate:	Unconjugated
Purification:	Protein A purification.
Concentration:	1 mg/ml
Product Form:	Liquid
Formulation:	Supplied in Phosphate Buffered Saline with 50% Glycerol and 0.09% Sodium Azide.
Storage:	Shipped at 4°C. Upon delivery aliquot and store at -20°C. Avoid freeze / thaw cycles.
Disclaimer:	This product is for research use only. It is not intended for diagnostic or therapeutic use.

Images:



Western blot analysis of mouse lung showing detection of ~18 kDa SOD1 (EDI) protein using Anti-Superoxide Dismutase 1 Antibody (A305127) at 1:1,000. Lane 1: Molecular Weight Ladder. Lane 2: mouse Lung. Load: 20 µg. Predicted/Observed Size: ~18 kDa.