

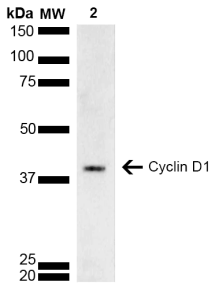
Anti-Cyclin D1 Antibody (A305166)

Specifications:

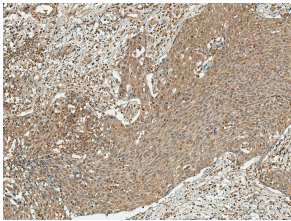
Name:	Anti-Cyclin D1 Antibody
Description:	Rabbit polyclonal antibody to Cyclin D1.
Applications:	WB, IHC
Recommended Dilutions:	WB: 1:1,000, IHC: 1:50
Reactivity:	Human, Rat
Immunogen:	Synthetic peptide from the N-terminal of Human Cyclin D1 (1-100 aa), conjugated to Keyhole Limpet Haemocyanin (KLH)
Host:	Rabbit
Clonality:	Polyclonal
Isotype:	IgG
Conjugate:	Unconjugated
Purification:	Peptide affinity purification.
Concentration:	1 mg/ml
Molecular Weight:	40 kDa
Product Form:	Liquid
Formulation:	Supplied in Phosphate Buffered Saline, pH 7.4, with 50% Glycerol and 0.09% Sodium Azide.
Storage:	Shipped at 4°C. Upon delivery aliquot and store at -20°C. Avoid freeze / thaw cycles.
Disclaimer:	This product is for research use only. It is not intended for diagnostic or therapeutic use.

Anti-Cyclin D1 Antibody (A305166)

Images:



Western blot analysis of rat brain lysate showing detection of ~33.7 kDa Cyclin D1 protein using Anti-Cyclin D1 Antibody (A305166) at 1:1,000 for 2 hours at room temperature. Lane 1: Molecular Weight Ladder (MW). Lane 2: rat brain lysate. Load: 15 µg. Block: 5% Skim Milk in 1X TBST. The secondary antibody used was Goat Anti-Rabbit HRP:IgG at 1:3000 for 1 hour at room temperature. Color Development: ECL solution for 5 minutes at room temperature. Predicted/Observed Size: ~33.7 kDa. Other Band(s): ~40 kDa due to post translational modifications.



Immunohistochemistry analysis of human esophagus, fixed in formalin and paraffin-embedded. The Primary Antibody used was Anti-Cyclin D1 Antibody (A305166) at 1:50 for 30 minutes at room temperature. Counterstain: Hematoxylin. Magnification: 10X. HRP-DAB Detection.